

VALVE



**INVESTMENT CASTING
STAINLESS STEEL &
CARBON STEEL
FULL/STD/RED.PORT**



ATEX



API 6D



AD 2000



ISO 9001-2000



PED(CE)



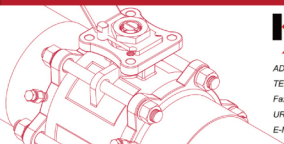
API 607



PED(MM)



German Lloyd's



KSK Corporation

ADDRESS:NO.50-5,Lane 160, Gautsuei Rd.,Heinchu City,Taiwan (R.O.C.)

TEL.886-3-5612369(OFFICE)

Fax.886-3-5612370(OFFICE)

URL:www.winever.com.tw

E-MAIL:sales@winever.com.tw

V-1 TYPE

SIZE : 1 / 4" ~ 2"



STAINLESS STEEL

AISI-316 (EN10213-4 1.4408) (ASTM-A351-CF8M)

AISI-304 (EN10213-4 1.4308) (ASTM-A351-CF8)

FEATURES:

*Pipe thread in accordance with ANSI B2.1 BS 21 1973,
DIN 259/2999, ISO 228

*Blow-out proof stem/Reduce bore

*Investment casting body and inscrewed

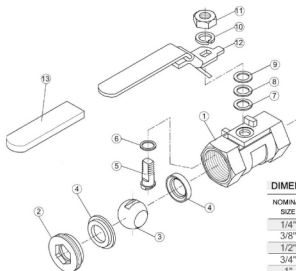
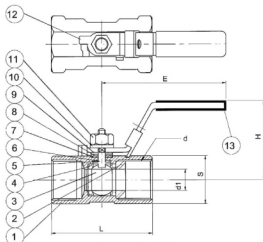
*800 PSI (55 BAR) W.O.G./1000 PSI (69 BAR) W.O.G.

OPTION: Locking device

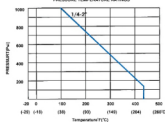
Oval Handle

Wing Handle

NO	NAME OF PARTS	MATERIALS
1	BODY	316 WCB
2	INSERT	316 WCB
3	BALL	SUS 316
4	SEAT	PTFE
5	STEM	SUS 316
6	THRUST WASHER	PTFE
7	STEM PASHER	PTFE
8	GLAKND WASHER	SUS 304
9	GLAKND WASHER	SUS 304
10	SPRING WASHER	SUS 304
11	NUT	SUS 304
12	HANDLE	SUS 304
13	HANDLE SLEEVE	VINYL GRIP



PRESSURE TEMPERATURE RATINGS



DIMENSIONS

UNIT:mm

NOMINAL SIZE	d	d1	L	H	E	S	Cv FACTOR	TORQUE kgf-cm	KG
1/4"	RC 1/4	5	39	36.5	69	17	3.8	12	0.070
3/8"	RC 3/8	7.2	44	37.5	79	21	4.0	12	0.102
1/2"	RC 1/2	9.2	56.5	40	110	25	4.5	13	0.166
3/4"	RC 3/4	12.5	59	45.3	108	31.5	9.0	20	0.247
1"	RC 1	15	71	49	112	38	16.0	38	0.412
1-1/4"	RC1-1/4	20	78	53	112	48	24.0	50	0.672
1-1/2"	RC1-1/2	25	83	60.5	157	53	37.0	72	0.838
2"	2	32	100	67.5	155.5	64	68.0	90	1.384

V-1M TYPE

SIZE : 1 / 4" ~ 2"



STAINLESS STEEL

AISI-316 (EN10213-4 1.4408) (ASTM-A351-CF8M)

AISI-304 (EN10213-4 1.4308) (ASTM-A351-CF8)

FEATURES:

*Pipe thread in accordance with ANSI B2.1, BS 21 1973,
DIN 259/2999, ISO 228

*Blow-out proof stem/Reduce bore

*Investment casting body and screwed

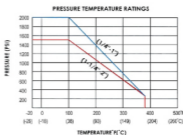
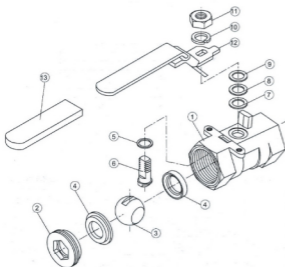
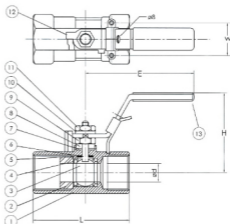
*2000PSI W.O.G

*Mounting Pad

OPTION: Locking device

Drilling and Tapped Mounting Pad

NO	NAME OF PARTS	MATERIALS
1	BODY	ASTM-A351-CF8M
2	INSERT	ASTM-A351-CF8M
3	BALL	ASTM-A351-CF8M
4	SEAT	15% R-PTFE
5	THRUST WASHER	PTFE
6	STEM	AISI 316
7	STEM SEAL	PTFE
8	GLAND WASHER	AISI 304
9	CONICAL SPRING WASHER	AISI 304
10	SPRING WASHER	AISI 304
11	NUT	AISI 304
12	LEVER HANDLE	AISI 304
13	HANDLE SLEEVE	PLASTIC



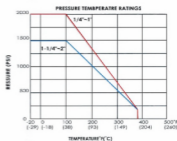
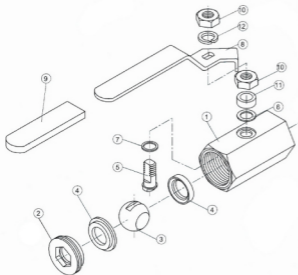
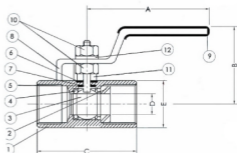
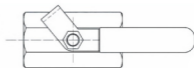
DIMENSIONS		UNIT:mm				
NOMINAL SIZE	d	L	H	E	W	KG
1/4"~3/ 8"	9.2	58.5	46.9	109	28.5	0.32
1/2"	9.2	66	57.9	98	28.2	0.275
3/4"	12.5	70	60.9	98	28.2	0.36
1	15	80	63.8	104.7	35.6	0.63
1-1/4"	20	95	70.3	101.9	35.6	0.894
1-1/2"	25	101	72.3	156.1	35.6	1.254
2"	32	114	78.3	155.1	35.6	1.852

V-1H_[1000] / V-1HC_[2000] TYPE

SIZE : 1 / 4" ~ 2"

**BAR STOCK / INVESTMENT CASTING
STAINLESS STEEL**
AISI-316 (EN10213-4 1.4408) (ASTM-A351-CF8M)
CARBON STEEL
S-20C (EN10213-2 1.0619) (ASTM-A216-WCB)
FEATURES:
**Pipe thread in accordance with ANSI B2.1, ANSI B1.20.1-1983*
BS21-1973, DIN 259/2999, ISO 228
**Blow-out proof stem*
**1000 PSI (69 BAR) / 2000 PSI (138 BAR) W.O.G*
**Dimension of SS316 and Carbon Steel is different*
OPTION: Polished Surface (Stainless Steel only)

NO	NAME OF PARTS	MATERIALS		
1	BODY	A1018	WCB	CF8M
2	INSERT	A1018	WCB	SUS 316
3	BALL	SUS 316	SUS 316	SUS 316
4	SEAT	15% R-PTFE	15% R-PTFE	15% R-PTFE
5	STEM	SUS 316	SUS 316	SUS 316
6	THRUST WASHER	PTFE	PTFE	PTFE
7	STEM SEAL	PTFE	PTFE	PTFE
8	HANDLE	SUS 304	SUS 304	SUS 304
9	HANDLE SLEEVE	PLASTIC	PLASTIC	PLASTIC
10	NUT	SUS 304	SUS 304	SUS 304
11	WASHER	SUS 304	WCB	SUS 304
12	SPRING WASHER	SUS 304	SUS304	SUS304


V-1HC - CF8M
DIMENSIONS
UNIT:mm

NOMINAL SIZE	A	B	C	D	E	KG
1/4"	66	38	39.4	5	17.5	0.12
3/8"	78	32.6	44	7.2	21.2	0.15
1/2"	108	62	56.7	9.0	29	0.33
3/4"	108	64.5	65.3	12.5	34.8	0.43
1"	108	63	76.5	15	41	0.63
1-1/4"	145	80.5	91.7	20	54.5	1.42
1-1/2"	145	80.5	98.5	25	57.9	1.45
2"	151	92	114.5	32	72.9	2.6

V-2IM TYPE

SIZE : 1 / 4" ~ 3"



STAINLESS STEEL

AISI-316 (EN10213-4 1.4408) (ASTM-A351-CF8M)

AISI-304 (EN10213-4 1.4308) (ASTM-A351-CF8)

CARBON STEEL

S-20C(EN10213-2 1.0619) (ASTM-A216-WCB)

FEATURES:

*Pipe thread in accordance with ANSI B2.1 , BS 21 1973,
DIN 259/2999,ISO 228

*800 PSI (55BAR) W.O.G./1000PSI (69BAR) W.O.G

*Blow-out proof stem / Full port

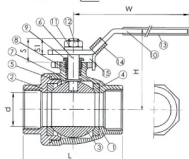
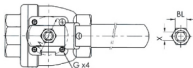
*Investment casting body and cap

*Mounting Flanged for ISO 5211

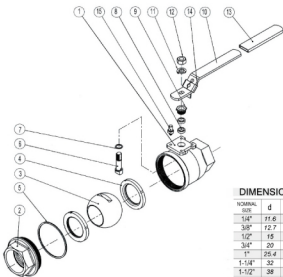
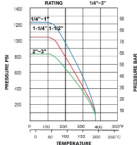
*Lug body

OPTION: Locking device

NO	PARTS	Q.TY	MATERIALS	
1	BODY	1	ASTM-A351-CF8M	ASTM-A216-WCB
2	CAP	1	ASTM-A351-CF8M	ASTM-A216-WCB
3	BALL	1	ASTM-A351-CF8M	ASTM-A351-CF8
4	BALL SEAT	2	PTFE	PTFE
5	JOINT GASKET	1	PTFE	PTFE
6	STEM	1	AISI 316	AISI 304
7	THRUST WASHER	1	PTFE	PTFE
8	STEM PACKING	2	PTFE	PTFE
9	GLAND NUT	1	AISI 304	AISI 304
10	HANDLE	1	AISI 304	AISI 304
11	SPRING WASHER	1	AISI 304	AISI 304
12	STEM NUT	1	AISI 304	AISI 304
13	PLASTIC COVER	1	PLASTIC	PLASTIC
14	LOCK DEVICE	1	AISI 304	AISI 304
15	STOP PIN	1	AISI 304	AISI 304



PRESSURE TEMPERATURE RATING



DIMENSIONS

NOMINAL SIZE	d	L	H	W	S	S1	X	BL	ISO 5211 M	Q	Cv FACTOR	TORQUE LB-IN	KG
1/4"	11.8	50	51	95	16.5	10.2	5	5/16"	36	M5	6.6	40	0.26
3/8"	12.7	50	51	95	16.5	10.2	5	5/16"	36	M5	7.9	40	0.26
1/2"	15	60	53	95	16.5	10.2	5	5/16"	36	M5	11.2	54	0.39
3/4"	20	70	60	110	20	13.5	6.5	3/8"	36	M5	21	78	0.57
1"	25.4	82	74	135	23.5	16	8	7/16"	42	M5	35	106	1.00
1-1/4"	32	95	80	135	23.5	16	8	7/16"	42	M5	57	150	1.44
1-1/2"	38	108	92	165	25.5	17	9	1/2"	50	M6	80	200	2.2
2"	50.8	134	107	165	25.5	17	9	1/2"	50	M6	150	260	3.65
2-1/2"	65	158	130	215	41	29.5	12	3/4"	70	M8	265	480	5.85
3"	80	185	142	215	41	29.5	12	3/4"	70	M8	415	750	9.72

V-2 TYPE

SIZE : 1/4" ~ 4"

Spring handle

STAINLESS STEEL

AISI-316 (EN10213-4 1.4408) (ASTM-A351-CF8M)

AISI-304 (EN10213-4 1.4308) (ASTM-A351-CF8)

CARBON STEEL

S-20C (EN10213-2 1.0619) (ASTM-A216-WCB)

FEATURES:

 *Pipe thread in accordance with ANSI B2.1 BS21 1973,
DIN 259/2999, ISO 228

*With mounting pad

*Blow-out proof stem/Full port

*Investment casting body and cap

*1000 PSI (69 BAR) W.O.G / 2000 PSI (138 BAR) W.O.G.

*Lug body

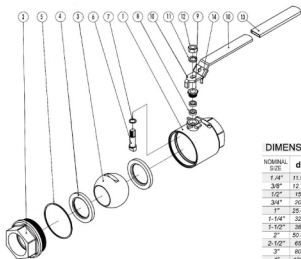
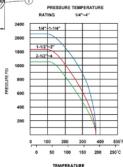
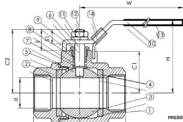
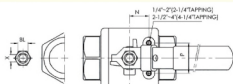
OPTION: Locking device

Drilling and Tapped Mounting Pad

DIN Standard, M3 Length

Spring handle

NO	PARTS	Q.TY	MATERIALS	
1	BODY	1	ASTM-A351-CF8M	ASTM-A216-WCB
2	CAP	1	ASTM-A351-CF8M	ASTM-A216-WCB
3	BALL	1	ASTM-A351-CF8M	ASTM-A351-CF8
4	BALL SEAT	2	PTFE	PTFE
5	JOINT GASKET	1	PTFE	PTFE
6	STEM	1	AISI 316	AISI 304
7	THRUST WASHER	1	PTFE	PTFE
8	STEM PACKING	2	PTFE	PTFE
9	GLAND NUT	1	AISI 304	AISI 304
10	HANDLE	1	AISI 304	AISI 304
11	SPRING WASHER	1	AISI 304	AISI 304
12	STEM NUT	1	AISI 304	AISI 304
13	PLASTIC COVER	1	PLASTIC	PLASTIC
14	LOCK DEVICE	1	AISI 304	AISI 304



DIMENSIONS

NOMINAL SIZE	d	L	H	W	S	S1	X	N	P	BL	Cv FACTOR	TORQUE kgf-cm	KG
1/4"	11.5	60.5	53	95	16.5	10.2	5	12.5	28.5	5/16"	6.6	45	0.3
3/8"	12.7	60.5	53	95	16.5	10.2	5	12.5	28.5	5/16"	7.9	45	0.3
1/2"	15	62.5	53	95	18.5	10.2	5	12.5	28.5	5/16"	11.2	54	0.35
3/4"	20	77	60	110	20	13.5	6.5	21	34.8	3/8"	21	78	0.58
1"	25.4	90	74	135	23.5	16	8	22.5	34.8	7/16"	35	106	1.04
1-1/4"	32	100	80	135	23.5	16	8	22.5	38.1	7/16"	57	150	1.54
1-1/2"	38	118	92	165	25.0	17	9	23.5	38.1	1/2"	80	200	2.3
2"	50.8	138	101	165	25.5	17	9	34	38.1	1/2"	150	380	3.6
2-1/2"	65	167	130	215	41	29.5	12	35	56	3/4"	265	600	6.8
3"	80	193	142	215	41	29.5	12	35	56	3/4"	415	770	11.58
4"	100	260	174	325	48	36.5	16	50	63	1"	780	1100	23

UNIT:mm

V-2E TYPE

SIZE : 1/4" ~ 4"



STAINLESS STEEL

AISI-316 (EN10213-4 1.4408) (ASTM-A351-CF8M)

AISI-304 (EN10213-4 1.4308) (ASTM-A351-CF8)

CARBON STEEL

S-20C(EN10213-2 1.0619) (ASTM-A216-WCB)

FEATURES:

*Pipe thread in accordance with ANSI B2.1, BS 21 1973,

DIN 259/2999, ISO 228

*With mounting pad

*Blow-out proof stem/full port

*Investment casting body and cap

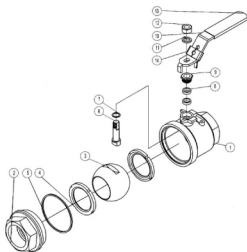
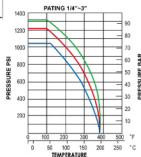
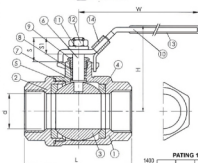
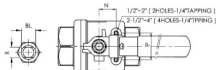
*1000 PSI (69 BAR) W.O.G.

*Lug body

OPTION: Locking device

Drilling and Tapped Mounting Pad

NO	PARTS	Q.TY	MATERIALS	
1	BODY	1	ASTM-A351-CF8M	ASTM-A216-WCB
2	CAP	1	ASTM-A351-CF8M	ASTM-A216-WCB
3	BALL	1	ASTM-A351-CF8M	ASTM-A351-CF8
4	BALL SEAT	2	PTFE	
5	JOINT GASKET	1	PTFE	PTFE
6	STEM	1	AISI 316	AISI 304
7	THRUST WASHER	1	PTFE	PTFE
8	STEM PACKING	2	PTFE	PTFE
9	GLAND NUT	1	AISI 304	AISI 304
10	HANDLE	1	AISI 304	AISI 304
11	SPRING WASHER	1	AISI 304	AISI 304
12	STEM NUT	1	AISI 304	AISI 304
13	PLASTIC COVER	1	PLASTIC	PLASTIC
14	LOCK DEVICE	1	AISI 304	AISI 304



DIMENSIONS

NOMINAL SIZE	d	L	H	W	S	S1	X	N	P	BL	Ov FACTOR	Temp kg/cm	KG
1/4"	11.6	64.5	51	45	16.0	10.2	5.0	12.5	25	5/16"	6.6	45	0.22
3/8"	12.7	44.5	51	45	16.0	10.2	5.0	12.5	25	5/16"	7.9	45	0.22
1/2"	15	57	53	45	16.0	10.2	5.0	12.5	25	5/16"	11.2	54	0.28
3/4"	20	65	59.5	110	21	13.5	6.5	21	24	3/8"	21	74	0.42
1"	25	70	73	130	24	16	8	23.5	32.5	7/16"	35	104	0.71
1-1/4"	32	87.5	79	135	25	16	8	23.5	38.1	7/16"	57	135	1.06
1-1/2"	38	102	90.5	165	26.5	17	9	23.5	38.1	1/2"	80	180	1.68
2"	50	123	98.5	165	26.5	17	9	23.5	38.1	1/2"	148	250	2.71
2-1/2"	65	156	130.5	215	41.5	29.5	12	35	56	3/4"	265	450	5.25
3"	80	184	142	215	41.5	29.5	12	35	56	3/4"	415	750	8.6
4"	100	250	173.5	325	47.5	36.5	16	50	63	1"	780	1150	16.32

V-2NF_{TYPE}

SIZE : 1 / 4" ~ 2"

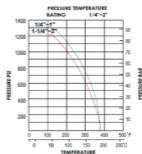
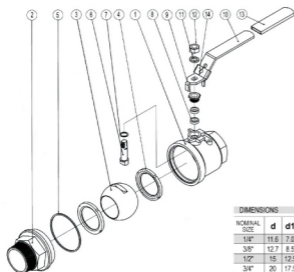
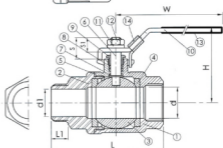
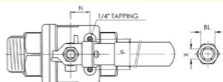

**Female x Male Screwed End
STAINLESS STEEL**
AISI-316 (EN10213-4 1.4408) (ASTM-A351-CF8M)
AISI-304 (EN10213-4 1.4308) (ASTM-A351-CF8)
CARBON STEEL
S-20C(EN10213-2 1.0619) (ASTM-A216-WCB)

FEATURES:

- *Pipe thread in accordance with ANSI B2.1, BS 21 1973, DIN 259/2999, ISO 228
- *With mounting pad
- *Blow-out proof stem / Full port
- *Investment casting body and cap
- *1000 PSI (69 BAR) W.O.G./2000 PSI (138 BAR) W.O.G.
- *Locking device, lugbody

OPTION: Locking device
Drilling and Tapped Mounting Pad

ITEM	PARTS	Q.TY	MATERIALS	
1	BODY	1	ASTM-A351-CF8M	ASTM-A216-WCB
2	CAP	1	ASTM-A351-CF8M	ASTM-A216-WCB
3	BALL	1	ASTM-A351-CF8M	ASTM-A351-CF8
4	BALL SEAT	2	PTFE	PTFE
5	JOINT GASKET	1	PTFE	PTFE
6	STEM	1	AISI 316	AISI 304
7	THRUST WASHER	1	PTFE	PTFE
8	STEM PACKING	1	PTFE	PTFE
9	GLAND NUT	2	AISI 304	AISI304
10	HANDLE	1	AISI 304	AISI 304
11	SPRING WASHER	1	AISI 304	AISI 304
12	STEM NUT	1	AISI 304	AISI 304
13	PLASTIC COVER	1	PLASTIC	PLASTIC
14	LOCK DEVICE	1	AISI 304	AISI 304


DIMENSIONS

NOMINAL SIZE	d	d1	L	L1	H	W	S	S1	X	N	P	BL	Q _v FACTOR	UNIT : mm	
														TORQUE	kgf-cm
1/4"	11.6	7.0	63	12.6	51	95	16.5	10.2	5.0	12.5	28.5	5/16"	6.6	40	
3/8"	12.7	8.5	63.5	13.2	51	95	16.5	10.2	5.0	12.5	28.5	5/16"	7.9	40	
1/2"	15	12.5	74	16.7	53	95	16.5	10.2	5.0	12.5	28.5	5/16"	11.2	54	
3/4"	20	17.5	82	18.2	59	110	20	13.5	6.5	21	34.8	3/8"	21	74	
1"	25	23.6	98.5	21	73	135	23.5	16	8.0	22.5	34.8	7/16"	35	104	
1-1/4"	32	30.8	112.4	23.5	78	135	23.5	16	8.0	23.5	38.1	7/16"	57	135	
1-1/2"	38	36.6	126.4	23.5	91	165	25.5	17	9.0	23.5	38.1	1/2"	80	180	
2"	50	47.5	151.7	27.8	99	165	25.5	17	9.0	23.5	38.1	1/2"	148	250	

V-2ER TYPE

SIZE : 1 / 4" ~ 2"



STAINLESS STEEL

AISI-316 (EN10213-4 1.4408) (ASTM-A351-CF8M)

AISI-304 (EN10213-4 1.4308) (ASTM-A351-CF8)

CARBON STEEL

S-20C(EN10213-2 1.0619) (ASTM-A216-WCB)

FEATURES:

*Pipe thread in accordance with ANSI B2.1, BS21 1973, DIN259/2999

*Locking device, lug body

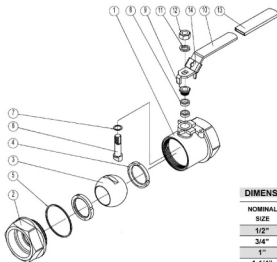
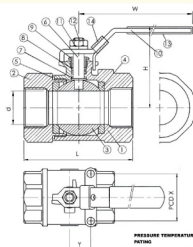
*Blow-out proof stem/Standard port

*Investment casting body and cap

*2000 PSI (138 BAR) W.O.G./800PSI (55 BAR) W.O.G.

OPTION: Locking device

ITEM	PARTS	Q.TY	MATERIALS	
1	BODY	1	ASTM-A351-CF8M	ASTM-A216-WCB
2	CAP	1	ASTM-A351-CF8M	ASTM-A216-WCB
3	BALL	1	ASTM-A351-CF8M	ASTM-A351-CF8
4	BALL SEAT	2	PTFE	PTFE
5	JOINT GASKET	1	PTFE	PTFE
6	STEM	1	AISI 316	AISI 304
7	THRUST WASHER	1	PTFE	PTFE
8	STEM PACKING	2	PTFE	PTFE
9	GLAND NUT	1	AISI 304	AISI 304
10	HANDLE	1	AISI 304	AISI 304
11	SPRING WASHER	1	AISI 304	AISI 304
12	STEM NUT	1	AISI 304	AISI 304
13	PLASTIC COVER	1	PLASTIC	PLASTIC
14	LOCK DEVICE	1	AISI 304	AISI 304

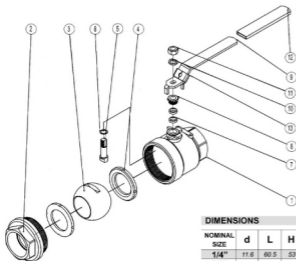
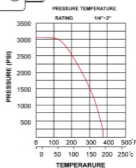
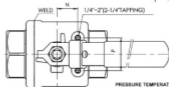
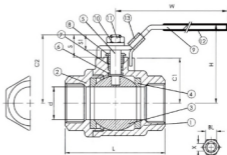


DIMENSIONS							UNIT : mm	
NOMINAL SIZE	d	L	H	W	X	Y	Cv FACTOR	TORQUE kgf-cm
1/2"	10	59.5	50.5	93	25	12.5	9.5	40
3/4"	15	60.0	52.9	93	25	12.5	14	57
1"	20	82.5	59.1	110	25	21	26	78
1-1/4"	25	91.0	65.1	110	33.5	22.5	43	106
1-1/2"	32	99.0	77.3	135	38.1	23.5	70	150
2"	40	120	86.9	135	38.1	23.5	102	200

V-2WTYPE NEW
SIZE : 1 / 4" ~ 2"

STAINLESS STEEL
AISI-316 (EN10213-4 1.4408) (ASTM-A351-CF8M)
AISI-304 (EN10213-4 1.4308) (ASTM-A351-CF8)
CARBON STEEL
S-20C(EN10213-2 1.0619) (ASTM-A216-WCB)
FEATURES:
**Pipe thread in accordance with ANSI B2.1, BS21 1973,*
DIN 259/2999, ISO 228
**Blow-out proof stem*
**3000 PSI (200 BAR)*
**Lug body*
**With Mounting Pad*
OPTION: Locking device
Drilling and Tapped Mounting Pad

ITEM	PARTS	Q.TY	MATERIALS	
1	BODY	1	ASTM-A351-CF8M	ASTM-A216-WCB
2	CAP	1	ASTM-A351-CF8M	ASTM-A216-WCB
3	BALL	1	ASTM-A351-CF8M	ASTM-A351-CF8
4	BALL SEAT	2	PTFE	PTFE
5	STEM	1	AISI 316	AISI 304
6	THRUST WASHER	1	PTFE	PTFE
7	STEM PACKING	2	PTFE	PTFE
8	GLAND NUT	1	AISI 304	AISI 304
9	HANDLE	1	AISI 304	AISI 304
10	STEM WASHER	1	AISI 304	AISI 304
11	STEM NUT	1	AISI 304	AISI 304
12	PLASTIC COVER	1	PLASTIC	PLASTIC
13	LOCK DEVICE	1	AISI 304	AISI 304


DIMENSIONS

NOMINAL SIZE	d	L	H	W	S	S1	X	N	P	BL	Cv FACTOR	UNIT : mm	
												TORQUE kgf-cm	KG
1/4"	11.6	60.5	53	95	16.5	10.2	5	12.5	28.5	5/16"	6.6	46	0.36
3/8"	12.7	60.5	53	95	16.5	10.2	5	12.5	28.5	5/16"	7.9	46	0.36
1/2"	15	62.5	53	95	16.5	10.2	5	12.5	28.5	5/16"	11.2	54	0.37
3/4"	20	77	60	110	20	13.5	6.5	21	34.8	3/8"	21	78	0.67
1"	25.4	90	74	135	23.5	16	8	22.5	34.8	7/16"	35	106	1.17
1-1/2"	38	119	92	165	25.5	17	9	23.5	38.1	1/2"	80	200	2.60
2"	50.8	138	101	165	25.5	17	9	34	38.1	1/2"	150	280	4.27

V-2X TYPE **NEW**

SIZE : 1 / 4" ~ 3"



2000 WOG

STAINLESS STEEL

AISI-316 (EN10213-4 1.4408) (ASTM-A351-CF8M)

AISI-304 (EN10213-4 1.4308) (ASTM-A351-CF8)

CARBON STEEL

S-20C(EN10213-2 1.0619) (ASTM-A216-WCB)

FEATURES:

*Pipe thread in accordance with ANSI B2.1, BS21 1973,

DIN 259/2999, ISO 228

*Lug body

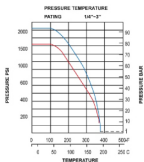
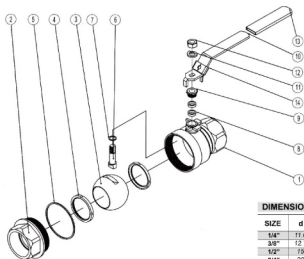
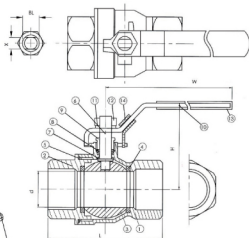
*Blow-out proof stem / Full port

*Investment casting body and cap

*2000 PSI (138 BAR) W.O.G (1/4"-2")
1500 PSI (103 BAR) W.O.G. (2-1/2"-3")

OPTION: Locking device
M3 Length

ITEM	PARTS	Q.TY	MATERIALS	
1	BODY	1	ASTM-A351-CF8M	ASTM-A216-WCB
2	CAP	1	ASTM-A351-CF8M	ASTM-A216-WCB
3	BALL	1	ASTM-A351-CF8M	ASTM-A351-CF8
4	BALL SEAT	2	PTFE	PTFE
5	JOINT GASKET	1	PTFE	PTFE
6	STEM	1	AISI 316	AISI 304
7	THRUST WASHER	1	PTFE	PTFE
8	STEM PACKING	2	PTFE	PTFE
9	GLAND NUT	1	AISI 304	AISI 304
10	HANDLE	1	AISI 304	AISI 304
11	SPRING WASHER	1	AISI 304	AISI 304
12	STEM NUT	1	AISI 304	AISI 304
13	PLASTIC COVER	1	PLASTIC	PLASTIC
14	LOCK DEVICE	1	AISI 304	AISI 304



DIMENSIONS

UNIT : mm

SIZE	d	L	H	W	X	BL	Cv	TORQUE
							FACTOR	kgf-cm
1/4"	11.6	44.5	51	95	5	5/16"	6.6	40
3/8"	12.7	44.5	51	95	5	5/16"	7.9	40
1/2"	15	57	53	95	5	5/16"	11.2	54
3/4"	20	65	59.5	110	6.5	3/8"	21	74
1"	25	76	72	125	8	7/16"	35	104
1-1/4"	32	87.5	79	135	8	7/16"	57	135
1-1/2"	38	102	90.5	165	9	1/2"	80	180
2"	50	123	98.5	165	9	1/2"	148	250
2-1/2"	65	155	130.5	215	12	3/4"	265	480
3"	80	184	142.5	215	12	3/4"	415	750

V-2S TYPE **NEW**

SIZE : 1 / 4" ~ 3"


ECONOMIC TYPE

STAINLESS STEEL

AISI-316 (EN10213-4 1.4408) (ASTM-A351-CF8M)

AISI-304 (EN10213-4 1.4308) (ASTM-A351-CF8)

CARBON STEEL

S-20C(EN10213-2 1.0619) (ASTM-A216-WCB)

FEATURES:

*Pipe thread in accordance with ANSI B2.1, BS 21 1973,

DIN 259/2999, ISO 228

*Lug body

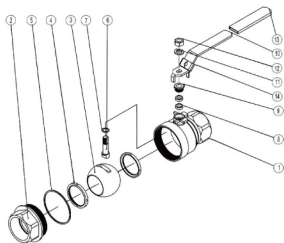
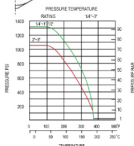
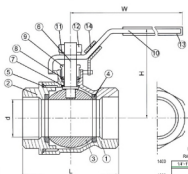
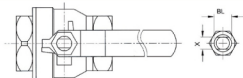
*Blow-out proof stem / Full port

*Investment casting body and cap

*1000 PSI (69 BAR) W.O.G.

OPTION: Locking device

ITEM	PARTS	Q.TY	MATERIAL	
1	BODY	1	ASTM-CF8M-A351	ASTM-A216-WCB
2	CAP	1	ASTM-CF8M-A351	ASTM-A216-WCB
3	BALL	1	ASTM-CF8M-A351	ASTM-CF8M-A351
4	BALL SEAT	2	PTFE	PTFE
5	JOINT GASKET	1	PTFE	PTFE
6	STEM	1	AISI 316	AISI 316
7	THRUST WASHER	1	PTFE	PTFE
8	STEM PACKING	2	PTFE	PTFE
9	GALIND NUT	1	AISI 304	AISI 304
10	HANDLE	1	AISI 304	AISI 304
11	SPRING WASHER	1	AISI 304	AISI 304
12	STEM NUT	1	AISI 304	AISI 304
13	PLASTIC COVER	1	PLASTIC	PLASTIC
14	LOCK DEVICE	1	AISI 304	AISI 304



DIMENSIONS

UNIT : mm

NOMINAL SIZE	d	L	H	W	X	BL	Cv FACTOR	TORQUE kgf-cm
1/4"	9.2	42.9	35	70	4	M&T	6.6	40
3/8"	12.5	44.5	51	95	5	5/16"	7.9	40
1/2"	15	53.6	53	95	5	5/16"	11.2	54
3/4"	20	62.6	59.5	110	6.5	3/8"	21	74
1"	25	72.9	73	135	8	7/16"	35	104
1-1/4"	32	87.3	79	135	8	7/16"	57	135
1-1/2"	38	97.0	90.5	165	9	1/2"	80	180
2"	50	116.0	98.5	165	9	1/2"	148	290
2-1/2"	65	145.4	130.5	215	12	3/4"	265	480
3"	80	166.8	142.5	215	12	3/4"	415	750
4"	100	209.6	173.5	325	16	1"	780	1100

SCREWED END 2-PIECE FULL PORT BALL VALVE

V-2MH_{TYPE}

SIZE : 1 / 4" ~ 3"



DIRECT MOUNTING PAD

STAINLESS STEEL

AISI-316 (EN10213-4 1.4408) (ASTM-A351-CF8M)

AISI-304 (EN10213-4 1.4308) (ASTM-A351-CF8)

CARBON STEEL

S-20C(EN10213-2 1.0619) (ASTM-A216-WCB)

FEATURES:

*Pipe thread in accordance with ANSI B2.1, BS21 1973, DIN259/2999

*Lug body

*Blow-out proof stem / Full port

*Investment casting body and cap

*1000 PSI (69 BAR) W.O.G

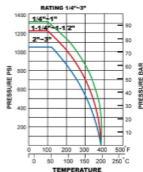
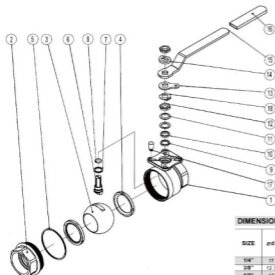
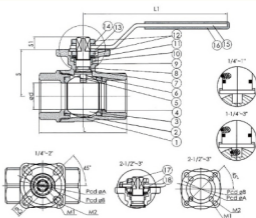
*Direct Mounting Flanged for ISO Standard 5211

*Screwed end

OPTION: DIN Standard, M3 Length

Locking device

ITEM	PARTS	Q.TY	MATERIALS	
1	BODY	1	ASTM-A351-CF8M	ASTM-A216-WCB
2	CAP	1	ASTM-A351-CF8M	ASTM-A216-WCB
3	BALL	1	ASTM-A351-CF8M	ASTM-A351-CF8
4	BALL SEAT	2	PTFE	PTFE
5	JOINT GASKET	1	PTFE	PTFE
6	STEM	1	AISI 316	AISI 304
7	THRUST WASHER	1	PTFE	PTFE
8	O-RING	1	VITON	VITON
9	STEM PACKING	1	PTFE	PTFE
10	STEM RING	1	AISI 304	AISI 304
11	BELLEVEILLE WASHER	2	AISI 304	AISI 304
12	STEM NUT	2	AISI 304	AISI 304
13	STOPPER	1	AISI 304	AISI 304
14	SPRING WASHER	1	AISI 304	AISI 304
15	HANDLE	1	AISI 304	AISI 304
16	PLASTIC COVER	1	PLASTIC	PLASTIC
17	STOPPER PIN	1	AISI 304	AISI 304
18	LOCK WASHER	1	AISI 304	AISI 304



DIMENSIONS											UNIT : mm				
SIZE	ød	SIZE						L	S	S1	L1	TORQUE kgf·cm	Cv FACTOR	KG	
		Pcd	øP	Acd	øB	M1	M2								øQ
1/4"	11	F53	28	-	-	R3.0	8	9.0	49.6	38	10	110	45	6.4	0.31
3/8"	12.7	F53	28	-	-	R3.0	8	9.0	49.6	38	10	110	45	7.9	0.31
1/2"	18	F64	42	-	-	R3.8	12	9.0	49.6	38	10	110	45	11.3	0.34
3/4"	20	F64	42	F65	50	R3.0	R3.5	11	75.5	41.7	12	126	80	21	0.62
1"	25	F64	42	F65	50	R3.0	R3.5	11	82.5	44.4	12	126	110	35	0.78
1-1/4"	32	F55	50	F67	70	R2.5	R4.5	14	80.0	54	16.5	150	155	57	1.35
1-1/2"	40	F55	50	F67	70	R2.5	R4.5	14	103.1	58.3	16.5	200	220	85	1.91
2"	50	F55	50	F67	70	R2.5	R4.5	14	133	67	16.5	200	330	148	3.8
2-1/2"	65	F67	70	F10	102	R4.5	R6.5	17	155	101.5	24.5	322.5	400	265	6.98
3"	80	F67	70	F10	102	R4.5	R6.5	17	182	112.5	24.5	322.5	680	415	10.3

V-3 TYPE

SIZE : 1/4" ~ 4"



STAINLESS STEEL

AISI-316 (EN10213-4 1.4408) (ASTM-A351-CF8M)

AISI-304 (EN10213-4 1.4308) (ASTM-A351-CF8)

CARBON STEEL

S-20C (EN10213-2 1.0619) (ASTM-A216-WCB)

FEATURES:

*Pipe thread in accordance with ANSI B2.1, BS 21 1973,

DIN 259/2999, ISO 228

*Lug body

*Blow-out proof stem / Full port

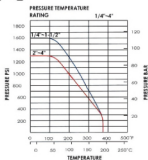
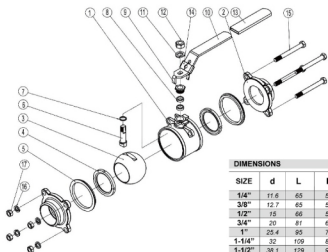
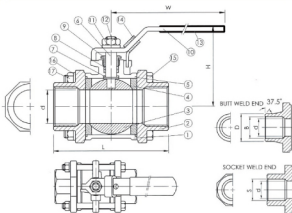
*Investment casting body and cap

*1000 PSI (69 BAR) W.O.G. / 1500 PSI (103 BAR) W.O.G.

OPTION: Locking device

DIN Standard, M3 Length

ITEM	PARTS	Q.TY	MATERIALS	
1	BODY	1	ASTM-A351-CF8M	ASTM-A216-WCB
2	ACP	2	ASTM-A351-CF8M	ASTM-A216-WCB
3	BALL	1	ASTM-A351-CF8M	ASTM-A351-CF8
4	BALL SEAT	2	PTFE	PTFE
5	JOINT GASKET	2	PTFE	PTFE
6	STEM	1	AISI 316	AISI 304
7	THRUST WASHER	1	PTFE	PTFE
8	STEM PACKING	2	PTFE	PTFE
9	GLAND NUT	1	AISI 304	AISI 304
10	HANDLE	1	AISI 304	AISI 304
11	STEM WASHER	1	AISI 304	AISI 304
12	STEM NUT	1	AISI 304	AISI 304
13	PLASTIC COVER	1	PLASTIC	PLASTIC
14	LOCK DEVICE	1	AISI 304	AISI 304
15	BOLT	4T, 2x6 PCS	AISI 304	AISI 304
16	SPRING WASHER	4T, 2x6 PCS	AISI 304	AISI 304
17	HEX NUT	4T, 2x6 PCS	AISI 304	AISI 304



DIMENSIONS

UNIT : mm

SIZE	d	L	H	W	B	D	S	Cv	TORQUE kgf-cm	KG
1/4"	11.6	65	51	95	12	18	14.1	6.6	40	0.41
3/8"	12.7	65	51	95	14	18	17.8	7.9	40	0.41
1/2"	15	66	58	95	17.1	22	21.7	11.2	54	0.65
3/4"	20	81	60	110	22.5	27.5	27.1	21	78	0.8
1"	25.4	95	74	135	28	33.5	33.8	35	106	1.2
1-1/4"	32	109	80	135	33.5	44	42.6	57	150	2.05
1-1/2"	38.1	129	92	165	43	50	48.7	80	200	2.8
2"	50.8	150	101	165	53	61.5	61.1	150	280	4.35
2-1/2"	65	180	130	215	65	76	76.9	265	500	8.4
3"	80	206	142	215	80	92	89.8	415	770	14.5
4"	100	261	174	325	100	115	115.4	780	1100	26.9

V-3E TYPE

SIZE : 1 / 4" ~ 4"



STAINLESS STEEL

AISI-316 (EN10213-4 1.4408) (ASTM-A351-CF8M)

AISI-304 (EN10213-4 1.4308) (ASTM-A351-CF8)

CARBON STEEL

S-20C(EN10213-2 1.0619) (ASTM-A216-WCB)

FEATURES:

*Pipe thread in accordance with ANSI B2.1, BS21 1973,
DIN 259 / 2999, ISO 228

*Lug body

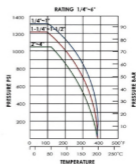
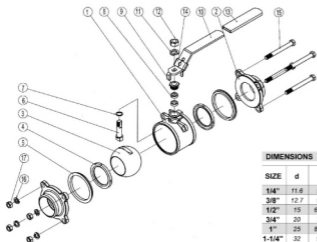
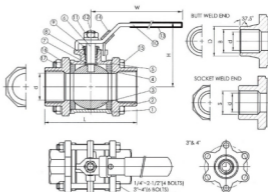
*Blow-out proof stem / Full port

*Investment casting body and cap

*1000 PSI (69 BAR) W.O.G

OPTION: Locking device

ITEM	PARTS	Q.TY	MATERIALS	
1	BODY	1	ASTM-A351-CF8M	ASTM-A216-WCB
2	CAP	2	ASTM-A351-CF8M	ASTM-A216-WCB
3	BALL	1	ASTM-A351-CF8M	ASTM-A351-CF8
4	JOINT SEAT	2	PTFE	PTFE
5	JOINT GASKER	2	PTFE	PTFE
6	STEM	1	AISI 316	AISI 304
7	THRUST WASHER	1	PTFE	PTFE
8	STEM PACKING	2	PTFE	PTFE
9	GLAND NUT	1	AISI 304	AISI 304
10	HANDLE	1	AISI 304	AISI 304
11	STEM WASHER	1	AISI 304	AISI 304
12	STEM NUT	1	AISI 304	AISI 304
13	PLASTIC COVER	1	PLASTIC	PLASTIC
14	LOCK DEVICE	1	AISI 304	AISI 304
15	BOLT	4F *X PCB	AISI 304	AISI 304
16	SPRING WASHER	4F *X PCB	AISI 304	AISI 304
17	HEX NUT	4F *X PCB	AISI 304	AISI 304



DIMENSIONS										UNIT : mm	
SIZE	d	L	H	W	B	D	S	Cv FACTOR	TORQUE kgf-cm	KG	
1/4"	11.6	54	51	95	12	18	14.1	6.6	40	0.34	
3/8"	12.7	54	51	95	12.52	18	17.6	7.9	40	0.34	
1/2"	15	61.5	55	95	15.8	22	21.7	11.2	54	0.48	
3/4"	20	71	58.5	110	20.93	28	27.2	21	74	0.62	
1"	25	83.5	73	135	26.64	34	33.9	34	104	0.96	
1-1/4"	32	97	78.5	135	35.05	44	42.6	57	135	1.49	
1-1/2"	38	110.5	90.5	165	40.9	50	48.7	80	180	2	
2"	50	129	99	165	52.5	61.5	61.1	148	250	3.12	
2-1/2"	65	171.5	127	215	68	76	76.9	265	480	6.5	
3"	80	200	136	215	82	90	89.8	415	750	10.42	
4"	100	252	172	325	106	115	115.4	780	1100	20.2	

V-3M TYPE

SIZE : 1 / 4" ~4"


STAINLESS STEEL

AISI-316 (EN10213-4 1.4408) (ASTM-A351-CF8M)
AISI-304 (EN10213-4 1.4308) (ASTM-A351-CF8)

CARBON STEEL

S-20C(EN10213-2 1.0619) (ASTM-A216-WCB)

FEATURES:

*Pipe thread in accordance with ANSI B2.1, BS 21 1973,
DIN 259/2999, ISO 228

*Lug body

*Blow-out proof stem / Full port

*Investment casting body and cap

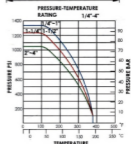
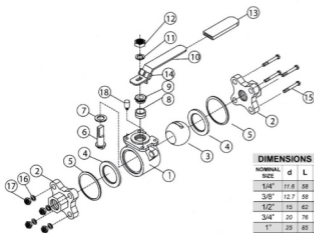
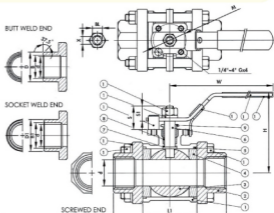
*1000 PSI (69 BAR) W.O.G.

*Mounting Pad for ISO Standard 5211

*Screwed end, butt weld end, socket weld end

OPTION: Locking device

ITEM	PARTS	Q.TY	MATERIALS	
1	BODY	1	ASTM-A351-CF8M	ASTM-A216-WCB
2	CAP	2	ASTM-A351-CF8M	ASTM-A216-WCB
3	BALL	1	ASTM-A351-CF8M	ASTM-A351-CF8
4	BALL SEAT	2	PTFE	PTFE
5	JOINT GASKET	2	PTFE	PTFE
6	STEM	1	AISI 316	AISI 304
7	THRUST WASHER	1	PTFE	PTFE
8	STEM PACKING	2	PTFE	PTFE
9	GLAND NUT	1	AISI 304	AISI 304
10	HANDLE	1	AISI 304	AISI 304
11	SPRING WASHER	1	AISI 304	AISI 304
12	STEM NUT	1	AISI 304	AISI 304
13	PLASTIC COVER	1	PLASTIC	PLASTIC
14	LOCK DEVICE	1	AISI 304	AISI 304
15	BOLT	4(3" 4"x6 PCS)	AISI 304	
16	SPRING WASHER	4(3" 4"x6 PCS)	AISI 304	
17	HEX NUT	1	AISI 304	
18	STOP PIN		AISI 304	AISI 304



NOMINAL SIZE	DIMENSIONS											UNIT:mm						
	d	L	H	W	S	S1	B	B1	D	D1	X	BL	ISO9211 M G	Cv	TORQUE FACTOR	K05		
1/4"	11.6	38	21.2	35	105	13.9	8.3	12	54.1	17.6	19	5.0	5/16"	36	MS	6.6	40	0.34
3/8"	12.7	38	21.2	35	105	13.3	8.3	14	77.6	17.6	22.5	5.0	5/16"	36	MS	7.9	40	0.38
1/2"	15	42	23	30	105	15.8	9.8	17.1	21.5	27	5.0	5/16"	36	MS	11.2	54	0.5	
3/4"	20	76	28	63	120	18.3	13.5	22.5	27.1	27	33	6.5	3/8"	36	MS	21	78	0.8
1"	25	85	35	79	158	21.5	15.6	28	33.8	34	40	8.0	7/16"	42	MS	35	106	1.7
1-1/4"	32	100	44.8	86	158	23	15.6	35.5	42.6	42.5	48.8	8.0	7/16"	42	MS	57	150	2.0
1-1/2"	38	115	55	94	195	25	16.9	43	48.7	49	55	9.0	1/2"	50	MS	80	200	2.5
2"	50	132	66.4	103	195	23.1	16.9	53	61.1	60.8	67.2	9.0	1/2"	50	MS	150	280	3.7
2-1/2"	65	165	84	133	245	41.2	30	65	76.9	76.2	86.4	12	3/4"	70	MS	265	500	7.4
3"	80	183	97.2	144	245	30.7	30	80	89.5	92	103	12	3/4"	102	M10	415	770	12.8
4"	100	232	125.4	177	320	47.1	36.6	100	115.4	116	130.7	16	1"	102	M10	790	1500	23

V-3MH TYPE **NEW**

SIZE : 1 / 4" ~ 4"



DIRECT MOUNTING PAD

STAINLESS STEEL

AISI-316 (EN10213-4 1.4408) (ASTM-A351-CF8M)

AISI-304 (EN10213-4 1.4308) (ASTM-A351-CF8)

CARBON STEEL

S-20C(EN10213-2 1.0619) (ASTM-A216-WCB)

FEATURES:

*Pipe thread in accordance with ANSI B2.1, BS21 1973,
DIN 259 / 2999, ISO 228

*Lug body

*Blow-out proof stem / Full port

*Investment casting body and cap

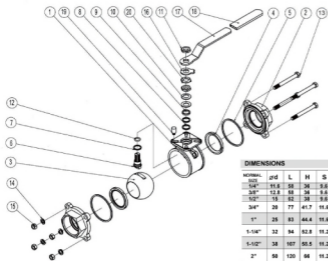
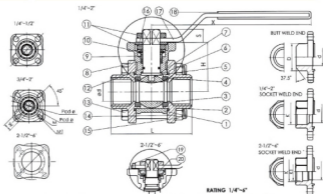
*1000 PSI (69 BAR) W.O.G

*Direct Mounting Pad for ISO Standard 5211

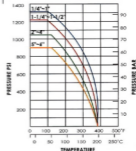
*Screwed end, butt weld end, socket weld end.

OPTION: Similar Design but with C Style clip
DIN Standard, M3 Length

ITEM	PARTS	Q.TY	MATERIALS	
1	BODY	1	ASTM-A351-CF8M	ASTM-A216-WCB
2	CAP	2	ASTM-A351-CF8M	ASTM-A216-WCB
3	BALL	1	ASTM-A351-CF8M	ASTM-A351-CF8
4	BALL SEAT	2	PTFE	PTFE
5	STEM GASKET	2	PTFE	PTFE
6	STEM	1	AISI 316	AISI 304
7	TURKEY WASHER	1	PTFE	PTFE
8	STEM PACKING	2	PTFE	PTFE
9	ARM WASHER	1	AISI 304	AISI 304
10	WELLSVILLE WASHER	2	AISI 304	AISI 304
11	STEM NUT	2	AISI 304	AISI 304
12	SPRING	1	ST100	VITON
13	ROCK	40-100*FMSPCS	AISI 304	AISI 304
14	SPRING WASHER	40-100*FMSPCS	AISI 304	AISI 304
15	ARM NUT	40-100*FMSPCS	AISI 304	AISI 304
16	STOPPER	1	AISI 304	AISI 304
17	HANDLE	1	S35-304	S35-304
18	PLASTIC COVER	1	PLASTIC	PLASTIC
19	STOPPER PIN	1	AISI 304	AISI 304
20	LOCK WASHER	1	AISI 304	AISI 304



RATING 1/4"~4"

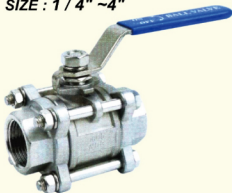


DIMENSIONS

NOMINAL SIZE	ød	L	H	S	X	ISO 5211										UNIT:mm	
						Pod	W	M	M1	Øv	TORQUE	D	d	K	K1		
1/4"	15.8	38	36	9.6	112	F03	ø 28	9	R0.0	-	6.6	45	ø 18.5	ø 11.6	ø 14.1		
3/8"	12.8	58	56	9.6	112	F03	ø 36	9	R0.0	-	7.9	45	ø 18.5	ø 11.7	ø 17.6		
1/2"	18	82	38	9.6	112	F03	ø 45	9	R0.0	-	11.2	55	ø 21.7	ø 15	ø 21.7		
3/4"	28	77	41.7	11.6	138	F04	ø 55	11	R0.5	R0.0	21	90	ø 27.2	ø 20	ø 27.2		
1"	38	83	44.4	11.6	138	F04	ø 62	11	R0.5	R0.0	34	110	ø 34	ø 25	ø 33.9		
						F05	ø 70	14	R4.5	R2.5	37	155	ø 42.7	ø 32	ø 42.6		
1.1/4"	38	107	55.5	11.2	205	F05	ø 70	14	R4.5	R2.5	30	220	ø 48.5	ø 40	ø 48.7		
						F07	ø 78	14	R4.5	R2.5	148	330	ø 66.5	ø 50	ø 61.1		
2"	88	120	56	11.2	205	F04	ø 78	14	R4.5	R2.5	306	400	ø 76.3	ø 65	ø 73.8	ø 79.9	
						F07	ø 78	17	R6.5	R2.5	366	400	ø 76.3	ø 65	ø 73.8	ø 79.9	
3"	98	162	112.5	18.8	330	F07	ø 78	17	R6.5	ø 9.0	416	600	ø 93	ø 80	ø 99.9	ø 82.5	
						F10	ø 78	17	R6.5	ø 9.0	780	900	ø 114	ø 100	ø 115.4	ø 103	
4"	100	213.6	127.0	18.8	330	F10	ø 102	17	R6.5	ø 12	1940	1200	ø 139.8	ø 125	ø 134.7	ø 127.2	
						F12	ø 102	27	R7.0	ø 12	1940	1200	ø 139.8	ø 125	ø 134.7	ø 127.2	
6"	190	342	175	47.8	500	F12	ø 102	27	R7.0	ø 12	1200	1800	ø 165.2	ø 150	ø 161.5	ø 154	
						F14	ø 102	27	R7.0	ø 12	1200	1800	ø 165.2	ø 150	ø 161.5	ø 154	

V-3R TYPE

SIZE : 1/4" ~4"



STAINLESS STEEL

AISI-316 (EN10213-4 1.4408) (ASTM-A351-CF8M)

AISI-304 (EN10213-4 1.4308) (ASTM-A351-CF8)

CARBON STEEL

S-20C(EN10213-2 1.0619) (ASTM-A216-WCB)

FEATURES:

*3-PC standard port ball valve

*Lug body

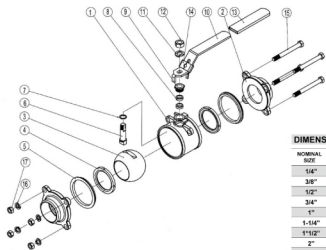
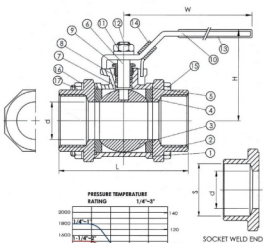
*Blow-out proof stem

*Investment casting body and cap

*1000 PSI

OPTION: Locking device

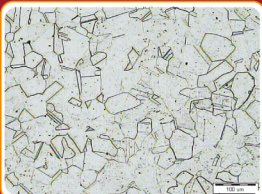
ITEM	PARTS	Q.TY	MATERIALS	
1	BODY	1	ASTM-A351-CF8M	ASTM-A216-WCB
2	CAP	2	ASTM-A351-CF8M	ASTM-A216-WCB
3	BALL	1	ASTM-A351-CF8M	ASTM-A351-CF8
4	BALL SEAT	2	PTFE	PTFE
5	JOINT GASKET	2	PTFE	PTFE
6	STEM	1	AISI 316	AISI 304
7	THRUST WASHER	1	PTFE	PTFE
8	STEM PACKING	2	PTFE	PTFE
9	GLAND NUT	1	AISI 304	AISI 304
10	HANDLE	1	AISI 304	AISI 304
11	STEM WASHER	1	AISI 304	AISI 304
12	STEM NUT	1	AISI 304	AISI 304
13	PLASTIC COVER	1	PLASTIC	PLASTIC
14	LOCK DEVICE	1	AISI 304	AISI 304
15	BOLT	4(3" 4"x6 PCS)	AISI 304	AISI 304
16	SPRING WASHER	4(3" 4"x6 PCS)	AISI 304	AISI 304
17	HEX NUT	4(3" 4"x6 PCS)	AISI 304	AISI 304



DIMENSIONS

UNIT : mm

NOMINAL SIZE	d	L	H	W	S	Cv FACTOR	TORQUE kgf·cm	KG
1/4"	11.8	64	51	95	14.1	6.7	40	0.45
3/8"	12	64	51	95	17.6	7.8	40	0.45
1/2"	12.7	64	51	95	21.7	9.5	40	0.4
3/4"	15	70	52	110	27.1	14	60	0.58
1"	20	86	60	135	33.8	26	78	0.8
1-1/4"	25.1	98	74	135	42.6	43	106	1.5
1-1/2"	32	120	80	165	48.7	70	150	1.98
2"	38	136	92	165	61.1	102	200	2.71
2-1/2"	50.8	165	101	215	78.9	182	280	4.23
3"	65	195	130	215	89.8	300	500	7.8



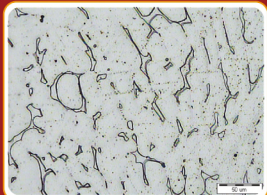
• BA管-Austenitic

100 Times



200 Times

• 鑄造件-游離肥立鐵



V-3NMHR TYPE NEW DIRECT MOUNTING PAD

SIZE : 1 / 2" ~ 10"

STAINLESS STEEL
AISI-316 (EN10213-4 1.4408) (ASTM-A351-CF8M)
AISI-304 (EN10213-4 1.4308) (ASTM-A351-CF8)
CARBON STEEL
S-20C(EN10213-2 1.0619) (ASTM-A216-WCB)
FEATURES:

*Long butt weld end, full port ball valve

*Lug body

*Blow-out proof stem

*Investment casting body and cap

*1000 PSI (69 BAR) W.O.G.

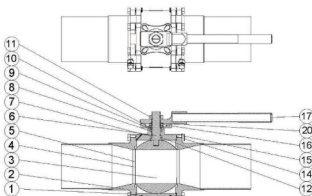
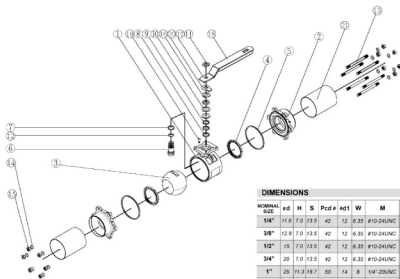
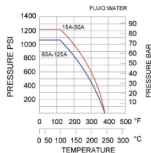
OPTION: Locking device

Mounting Pad Standard ISO 5211

End caps are stainless steel 316/

(EN10213 - 4 1.4409)

ITEM	PARTS	Q.TY	MATERIALS	
1	BODY	1	ASTM-A351-CF8M	ASTM-A216-WCB
2	CAP	2	ASTM-A351-CF8M	ASTM-A216-WCB
3	BALL	1	ASTM-A351-CF8M	ASTM-A351-CF8
4	BALL SEAT	2	PTFE	PTFE
5	JOINT GASKET	2	PTFE	PTFE
6	STEM	1	AISI 316	AISI 316
7	THRUST WASHER	1	15% R-PTFE	15% R-PTFE
8	STEM PACKING	2	15% R-PTFE	15% R-PTFE
9	HIGH WASHER	1	AISI 304	AISI 304
10	BELLEVEILLE WASHER	2	AISI 304	AISI 304
11	STEM NUT	1	AISI 304	AISI 304
12	O-RING	1	WTCO	WTCO
13	BOLT	6M-214 2-1/2"-416	AISI 304	AISI 304
14	SPRING WASHER	6M-214 2-1/2"-416	AISI 304	AISI 304
15	HEX NUT	6M-214 2-1/2"-416	AISI 304	AISI 304
16	STOPPER	1	AISI 304	AISI 304
17	HANDLE	1	AISI 304	AISI 304
18	PLASTIC COVER	1	PLASTIC	PLASTIC
19	STOPPER PIN	1	AISI 304	AISI 304
20	LOCKWASHER	1	AISI 304	AISI 304
21	TUBE	2	AISI 304	AISI 304


PRESSURE TEMPERATURE
RATING 65A-125A

DIMENSIONS
UNIT : mm

NOMINAL SIZE	#D	H	S	Pcd	qd1	W	M	D	D1	K	K1	K2	F	E	B	C	C1	BT	BT	SW
1/4"	11.6	7.0	13.5	42	12	0.35	#10-24UNC	58.1	13	14.1	25	22	10	10.5	160	66.4	39.1	69	122.2	122.2
3/8"	12.9	7.0	13.5	42	12	0.35	#10-24UNC	58.1	14.7	17.5	29	27.6	10	10.5	160	66.4	39.1	69	122.2	122.2
1/2"	15	7.0	13.5	42	12	0.35	#10-24UNC	21.7	17	21.7	31.3	33	10	11	160	66.4	39.1	74	124.2	124.2
3/4"	20	7.0	13.5	42	12	0.35	#10-24UNC	27.2	22	27.1	38.5	40	12	12	160	72.4	43.1	88	131.2	131.2
1"	25	11.3	18.7	60	14	8	1/4"-20UNC	34	28	33.6	43	45.5	13	12.5	175	87.4	52.2	94	133.2	133.2
1-1/4"	30	11.3	18.7	60	14	8	1/4"-20UNC	42.7	35	42.5	55	57.5	13	15	175	90.7	55.5	104	145.2	145.2
1-1/2"	40	12.4	22.4	70	16	9.5	5/16"-18UNC	48.6	43	48.6	62	65	13	17	220	107.7	67.2	117	157.2	157.2
2"	50	12.4	22.4	70	16	9.5	5/16"-18UNC	60.5	54	61.1	71	71	16	18	220	114.0	73.7	132	168.2	168.2

V-3L TYPE

SIZE : 1 / 4" ~ 4"



STAINLESS STEEL

AISI-316 (EN10213-4 1.4408) (ASTM-A351-CF8M)

AISI-304 (EN10213-4 1.4308) (ASTM-A351-CF8)

CARBON STEEL

S-20C(EN10213-2 1.0619) (ASTM-A216-WCB)

FEATURES:

- *Long butt weld end, full port ball valve
- *Lug body
- *Blow-out proof stem
- *Investment casting body and cap
- *1000 PSI (69 BAR) W.O.G.

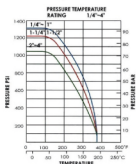
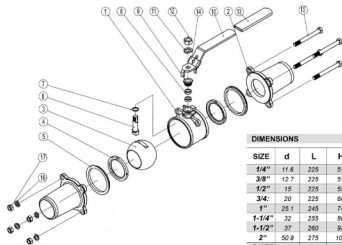
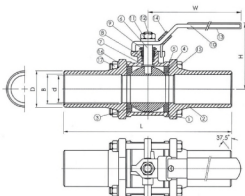
OPTION: Locking device

Mounting Pad Standard ISO 5211

End caps are stainless steel 316L

(EN10213-4 1.4409)

ITEM	PARTS	Q.TY	MATERIALS	
1	BODY	1	ASTM-A351-CF8M	ASTM-A216-WCB
2	CAP	2	ASTM-A351-CF8M	ASTM-A216-WCB
3	BALL	1	ASTM-A351-CF8M	ASTM-A351-CF8
4	BALL SEAT	2	PTFE	PTFE
5	JOINT GASKET	2	PTFE	PTFE
6	STEM	1	AISI 316	AISI 304
7	THRUST WASHER	1	PTFE	PTFE
8	STEM PACKING	2	PTFE	PTFE
9	GLAND NUT	1	AISI 304	AISI 304
10	HANDLE	1	AISI 304	AISI 304
11	STEM WASHER	1	AISI 304	AISI 304
12	STEM NUT	1	AISI 304	AISI 304
13	PLASTIC COVER	1	PLASTIC	PLASTIC
14	LOCK DEVICE	1	AISI 304	AISI 304
15	BOLT	4(3: 4"x6 PCS)	AISI 304	AISI 304
16	SPRING WASHER	4(3: 4"x6 PCS)	AISI 304	AISI 304
17	HEX NUT	4(3: 4"x6 PCS)	AISI 304	AISI 304



DIMENSIONS							UNIT:mm		
SIZE	d	L	H	W	B	D	Cv FACTOR	TORQUE kg/cm	KG
1/4"	11.6	225	51	95	12.2	12.2	6.6	40	0.5
3/8"	12.7	225	51	95	14	14	7.9	40	0.56
1/2"	15	225	55	95	17	17	11.2	54	0.78
3/4"	20	225	60	110	22.5	22.5	21	78	1.04
1"	25.1	245	74	135	27	27	35	106	1.72
1-1/4"	32	255	80	135	35	35	57	150	2.67
1-1/2"	37	260	92	165	41.5	41.5	80	200	3.37
2"	50.8	275	101	165	53	53	150	280	5.12
2-1/2"	65	334	130	215	68	68	265	500	8.4
3"	80	354	142	215	80	80	415	770	14.5
4"	100	365	174	325	100	100	780	1100	36.5

V-3WM TYPE NEW

DIRECT MOUNTING PAD

SIZE : 1 / 4" ~ 2"



STAINLESS STEEL

AISI-316 (EN10213-4 1.4408) (ASTM-A351-CF8M)

AISI-304 (EN10213-4 1.4308) (ASTM-A351-CF8)

CARBON STEEL

S-20C(EN10213-2 1.0619) (ASTM-A216-WCB)

FEATURES:

*Pipe thread in accordance with ANSI B2.1, BS21 1973

DIN259 / 2999, ISO 228

*Blow-out proof stem

*Investment casting body and cap

*2000PSI / 3000PSI (W.O.G)

*Lug body *Fire-safe design

*Screwed end, butt weld & socket weld end.

*Direct Mounting Pad ISO 5211

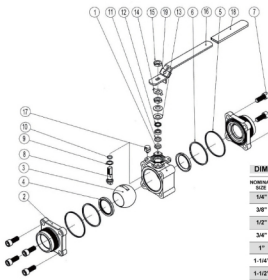
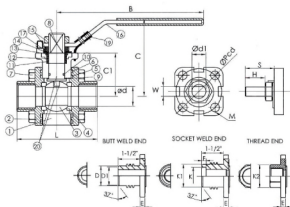
*Heat diffusion

OPTION: Locking device

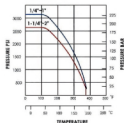
Standard Port

API 607 fire safe Approved

ITEM	PARTS	Q.TY	MATERIALS		
1	BODY	1	ASTM-A351-CF8M	ASTM-A351-WCB	ALLOY-20
2	CAP	2	ASTM-A351-CF8M	ASTM-A351-WCB	ALLOY-20
3	BALL	1	ASTM-A351-CF8M	ASTM-A351-CF8	ALLOY-20
4	BALL SEAT	2	TFM	TFM	TFM
5	JOINT GASKET	2	TFM	TFM	TFM
6	JOINT GASKET	2	GRAPHITE	GRAPHITE	GRAPHITE
7	BOLT	8	AISI-316	AISI-316	AISI-316
8	STEM	1	ASTM F7-4PH	AISI-304	ALLOY-20
9	THRUST WASHER	1	GRAPHITE	GRAPHITE	GRAPHITE
10	O-RING	1	VITON	VITON	VITON
11	STEM PACKING	2	TFM	TFM	TFM
12	HIGH WASHER	1	AISI-304	AISI-304	AISI-304
13	BELLEVILLE WASHER	2	AISI-304	AISI-304	AISI-304
14	LOCK WASHER	1	AISI-304	AISI-304	AISI-304
15	STEM NUT	2	AISI-304	AISI-304	AISI-304
16	HANDLE	1	AISI-304	AISI-304	AISI-304
17	STOPPER	1	AISI-304	AISI-304	AISI-304
18	PLASTIC COVER	1	PLASTIC	PLASTIC	PLASTIC
19	LOCKING DEVICE	1	AISI-304	AISI-304	AISI-304
20	ANTI-STATIC	2	AISI-316	AISI-316	AISI-316



PRESSURE-TEMPERATURE RATING: 1/4" - 2"



DIMENSIONS

NOMINAL SIZE	DIMENSIONS														UNIT : mm					
	#d	H	S	Pod	#d1	W	M	D	D1	K	K1	K2	F	E	B	C	C1	BT	BW	SW
1/4"	11.8	7.0	13.5	42	52	6.35	#10-24UNC	18.1	13	14.1	26	22	10	10.5	180	68.4	38.1	89	122.3	122.2
3/8"	12.8	7.0	13.5	42	52	6.35	#10-24UNC	18.1	14.7	17.5	26	27.5	10	10.5	180	68.4	38.1	89	122.3	122.2
1/2"	15	7.0	13.5	42	52	6.35	#10-24UNC	21.7	17	21.7	31.5	33	10	11	180	68.4	38.1	74	124.2	124.2
3/4"	20	7.0	13.5	42	52	6.35	#10-24UNC	27.2	22	27.1	38.5	40	13	12	180	72.4	42.1	89	131.2	131.2
1"	20	11.2	18.7	50	54	8	1/4"-20UNC	34	28	33.8	43	45.5	13	12.5	175	87.4	34	133.2	133.2	133.2
1-1/4"	32	11.2	18.7	50	54	8	1/4"-20UNC	42.7	35	42.5	55	57.5	13	15	175	90.7	55.0	104	145.2	145.2
1-1/2"	40	13.4	22.4	70	76	9.5	5/16"-18UNC	48.6	43	48.6	62	65	13	17	220	107.7	67.2	117	167.2	167.2
2"	50	13.4	22.4	70	76	9.5	5/16"-18UNC	60.5	54	61.1	75	81	16	18	220	114.0	71.7	132	188.2	188.2

V-3WMH TYPE

SIZE : 1 / 4" ~ 2"



DIRECT MOUNTING PAD

STAINLESS STEEL

AISI-316 (EN10213-4 1.4408) (ASTM-A351-CF8M)

AISI-304 (EN10213-4 1.4308) (ASTM-A351-CF8)

CARBON STEEL

S-20C(EN10213-2 1.0619) (ASTM-A216-WCB)

FEATURES:

*Pipe thread in accordance with ANSI B2.1, BS21 1973, DIN 259 / 2999, ISO 228

*Blow-out proof stem

*Investment casting body and cap

*2000 PSI or 3000 PSI (W.O.G)

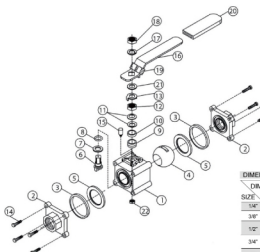
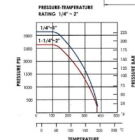
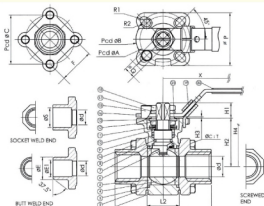
*Lug body

*Screwed end, butt weld end & socket weld end.

*Direct mounting pad ISO 5211

OPTION: Locking device / Standard Port,
Similar Design but with C style clip
DIN Standard M3 Length
Fire-Safe design

ITEM	PARTS	Q.TY	MATERIALS	
1	BODY	1	ASTM-A351-CF8M	ASTM-A216-WCB
2	END CAP	2	ASTM-A351-CF8M	ASTM-A216-WCB
3	JOINT GASKET	2	PTFE	PTFE
4	SOLID BALL	1	ASTM-A351-CF8M	ASTM-A351-CF8
5	BALL SEAT	2	PTFE	PTFE
6	STEM	1	AISI 316	AISI 304
7	THURST WASHER	1	PTFE	PTFE
8	O-RING	1	VTON	VTON
9	STEM PACKING	2	PTFE	PTFE
10	STEM RING	1	AISI 304	AISI 304
11	BELLEVILLE WASHER	2	AISI 307	AISI 301
12	STEM NUT	1	AISI 304	AISI 304
13	SADDLE WASHER	1	AISI 304	AISI 304
14	HEX BOLT	8	AISI 304	AISI 304
15	STOP PIN	1	AISI 304	AISI 304
16	HANDLE	1	AISI 304	AISI 304
17	SPRING WASHER	1	AISI 304	AISI 304
18	HANDLE NUT	1	AISI 304	AISI 304
19	LOCKING DEVICE	1	AISI 304	AISI 304
20	COVER	1	PLASTIC	PLASTIC
21	SQUARE WASHER	1	AISI 304	AISI 304



DIMENSIONS													ISO-5211				UNIT:mm								
DN	d	BD	BD/BW	L	L2	H1	H2	H3	H4	Pcd	ØD	R1	R2	E	E1	S	ØP	C	T	Pcd F	F	X	TORQUE N·M	K016	
1/4"	11	65	65	70	22.7	10	34			56	Ø50.0	0.0	Ø3.0		18	12	54.1	37.5	6.5	Ø6	40	28.2	112	40	0.52
3/8"	12.6	65	65	70	22.7	10	34			56	Ø50.0	0.0	Ø3.0		18	14	17.6	37.5	6.5	Ø6	40	28.2	112	40	0.5
1/2"	16	75	75	75	24	12	38			62	Ø64.0	0.0	Ø3.0		22	17.1	25.7	41.5	6.5	Ø6	40	31.1	112	54	0.83
3/4"	20	80	80	80	26	12	42			66	Ø64.0	0.0	Ø3.0		27.5	22.5	27.1	41.5	6.4	Ø8	50.4	37.8	125	74	0.97
1"	25	90	90	100	34	12	50			75	Ø84.0	0.0	Ø3.0		33.8	30.4	32.8	50.4	6.4	Ø8	60	40	138	104	1.04
1-1/4"	32	110	110	140	44	12	65			85	Ø94.0	0.0	Ø3.0		44	33.8	44	50.4	10.6	M10	77	54.4	138	135	2.25
1-1/2"	38	120	120	125	53	16	69			95	Ø94.0	0.0	Ø3.0		50	42	50	50.5	10.6	M10	80	65.8	170	160	3.03
2"	50	140	140	160	66	18	75			104	Ø94.0	0.0	Ø3.0		61.5	61.5	61.5	10.6	M10	122	96.3	170	250	6.97	

V-3W TYPE

SIZE : 1 / 4" ~ 2"



STAINLESS STEEL

AISI-316 (EN10213-4 1.4408) (ASTM-A351-CF8M)

AISI-304 (EN10213-4 1.4308) (ASTM-A351-CF8)

CARBON STEEL

S-20C(EN10213-2 1.0619) (ASTM-A216-WCB)

FEATURES:

*Pipe thread in accordance with ANSI B2.1 BS21 1973,

DIN259/2995,ISO 228

*Blow-out proof stem

*Investment casting body and cap

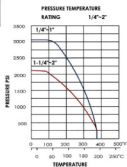
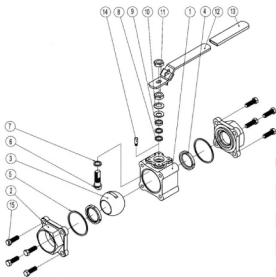
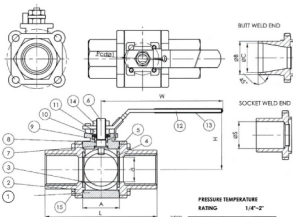
*3000 PSI Lug body

*Screwed end, butt weld & socket weld end.

*Mounting Pad ISO 5211

OPTION: Locking device

ITEM	PARTS	Q.TY	MATERIALS	
1	BODY	1	AISI-A351-CF8M	ASTM-A216-WCB
2	CAP	1	AISI-A351-CF8M	ASTM-A216-WCB
3	BALL	1	AISI-A351-CF8M	ASTM-A351-CF8
4	BALL SEATS	2	PTFE	PTFE
5	JOINT GASKET	1	PTFE	PTFE
6	STEM	1	AISI316	AISI 304
7	THRUST WASHER	1	PTFE	PTFE
8	STEM PACKING	2	PTFE	PTFE
9	STEM BUSHING	1	AISI 304	AISI 304
10	BELLEVILLE WASHER	2	AISI 304	AISI 304
11	STEM NUT	1	AISI 304	AISI 304
12	HANDLE	1	AISI 304	AISI 304
13	PLASTIC COVER	1	PLASTIC	PLASTIC
14	HANDLE NUT	1	AISI 304	AISI 304
15	BODY BOLT	8	AISI 304	AISI 304



DIMENSIONS											UNIT:mm	
NOMINAL SIZE	A	B	C	d	S	H	L	Pcd	1	W	TORQUE kgf-cm	Cv FACTOR
1/4"	20.8	18	12	8	14.1	49	66.2	36	116	40	4.5	
3/8"	20.8	18	14	11.5	17.6	49	66.2	36	116	40	6.6	
1/2"	20.8	22	17.1	12.7	21.7	49	66.2	36	116	40	7.9	
3/4"	24.8	27	22.5	15	27.2	53	71.5	36	116	60	11.2	
1"	32	33.5	28	20	33.9	63	96.8	42	150	78	21	
1-1/4"	41.4	42	33.5	25.4	42.6	67	106.4	42	150	110	34	
1-1/2"	48.8	48	43	32	48.7	77	116.5	50	181	155	57	
2"	56.5	60	53	38	61.1	85	128.5	50	181	220	80	

V-3WAY TYPE

SIZE : 1 / 4" ~ 2"



STAINLESS STEEL

AISI-316 (EN10213-4 1.4408) (ASTM-A351-CF8M)

AISI-304 (EN10213-4 1.4308) (ASTM-A351-CF8)

CARBON STEEL

S-20C(EN10213-2 1.0619) (ASTM-A216-WCB)

FEATURES:

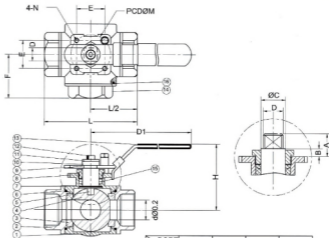
- *Anti-static device
- *Blow-out proof stem, Lever operated.
- *1000 PSI (69 BAR) W.O.G.
- *L port, T port

OPTION: Locking device

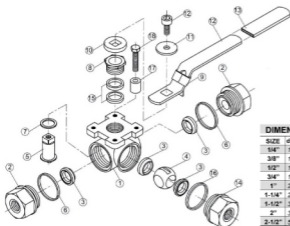
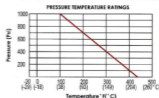
Direct Mounting Pad ISO 5211

Mounting pad for ISO 5211

ITEM	PARTS	MATERIALS
1	BODY	ASTM A351 GR CF8M
2	CAP	ASTM A351 GR CF8M
3	SEAT	PTFE/BRG/UF
4	BALL	ASTM A351 GR CF8M
5	STEM	S.S 316
6	END SEALS	PTFE
7	THRUST WASHER	PTFE
8	GLAND	S.S 304
9	HANDLE	S.S 304
10	HANDLE WASHER	S.S 304
11	WASHER	S.S 304
12	HANDLE NUT	S.S 304
13	HANDLE SLEEVE	VINYL GRIP
14	END CAP	ASTM A351 GR CF8M
15	STEM PACKINGS	PTFE
16	END SEALS	PTFE
17	STOP PIN	S.S 304
18	BOLT	S.S 304



PORT TYPE	1		2		3		4	
	L	1	2	1	2	1	2	1
T	1	2	1	2	1	2	1	2



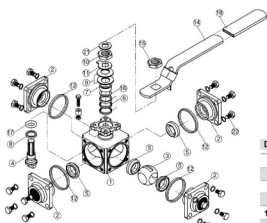
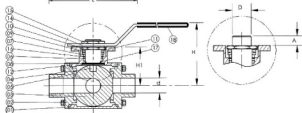
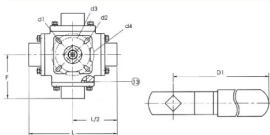
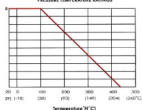
DIMENSIONS										UNIT:mm		
SIZE	ø10.2	L±0.8	H±1.0	D1±1.0	A	B	C	D	E	F	M	N
1/4"	11.0	69.4	60.7	133.4	10.7	5.7	12	9	29.7	34.6	42	M5*0.8
3/8"	11.0	69.4	60.7	133.4	10.7	5.7	12	9	29.7	34.6	42	M5*0.8
1/2"	12.5	75.7	64.1	133.4	10.7	5.8	12	9	29.7	37.25	42	M5*0.8
3/4"	16.0	86.6	82.4	178.5	13.9	6.9	15	11	35.4	44.7	50	M6*1
1"	20.0	102	86.1	178.5	20.0	8.5	15	11	35.4	51.4	50	M6*1
1-1/4"	25.0	118.2	91.4	209.9	23.8	7.8	15	11	35.4	57.7	50	M6*1
1-1/2"	32.0	125.8	102.7	206	25.8	10.2	15	11	49.5	62.7	70	M8*1.25
2"	38.0	149	110.7	229.9	25.3	9.7	18.5	14	49.5	74.6	70	M8*1.25
2-1/2"	50	180	132	265	24.6	8.6	18.5	14	49.5	82	70	M8*1.25
3"	60	185	132	265	29	9.0	21.0	17	72.1	92.9	102	M10*1.5

V-4WAY TYPE NEW

DIRECT MOUNTING PAD
SIZE : 1 / 4" ~ 2"

STAINLESS STEEL
AISI-316 (EN10213-4 1.4408) (ASTM-A351-CF8M)
AISI-304 (EN10213-4 1.4308) (ASTM-A351-CF8)
CARBON STEEL
S-20C(EN10213-2 1.0619) (ASTM-A216-WCB)
FEATURES:
**Anti-static device*
**Blow-out proof stem, Lever operated.*
**1000 PSI (69 BAR) W.O.G.*
**L portn T port, X port*
OPTION: Locking device
Direct Mounting Pad ISO 5211
3-Way ball valve

ITEM	PART	Q.TY	MATREIAL
1	BODY	1	ASTM-A351-CF8M
2	CAP	4	ASTM-A351-CF8M
3	BALL	1	ASTM-A351-CF8M
4	STEM	1	S.S.316
5	BALL SEATS	4	PTFE
6	STEM PACKING	1	PTFE 15% G.F
7	GLAND BUSH	1	S.S.304
8	THRUST WASHER	1	PTFE 15% G.F
9	BEVELLSE WASHER	2	SUS304-CSP
10	HANDLE NUT	1	S.S.304
11	STOP	1	S.S.304
12	GASRET	1	RP/TFE
13	GASKET	4	PTFE
14	HANDLE	1	S.S.304
15	HANDLE NUT	1	S.S.304
16	THRUSP WASHER	1	S.S.304
17	O-RING	1	VITON
18	HANDLE SLEEVE	3	PLASTIC


PRESSURE TEMPERATURE RATINGS


PORT TYPE	1	2	3	4
L				
T				
X				

DIMENSIONS
UNIT:mm

SIZE	d	L	H	D1	A	D	F	d1	d2	d3	d4	H1
1/2"	16	96	89	133	7.5	9	48	R3.0	R3.0	36	42	50
3/4"	20	107	98	178.5	11	11	53.5	R3.0	R3.5	42	50	59.5
1"	25	126	102	178.5	11.5	11	63	R3.0	R3.5	42	50	63.5
1-1/4"	32	133	118.5	230	15.2	14	86.5	R3.5	R4.6	50	70	79.5
1-1/2"	38	151	127	230	14.3	14	75.5	R3.5	R4.6	50	70	88
2"	50	166	139	280	17.8	17	83	R4.6	R5.7	70	102	105

V-1FW TYPE

SIZE : 1 / 2" ~ 6"



STAINLESS STEEL

AISI-316 (EN10213-4 1.4408) (ASTM-A351-CF8M)

AISI-304 (EN10213-4 1.4308) (ASTM-A351-CF8)

CARBON STEEL

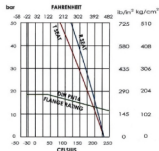
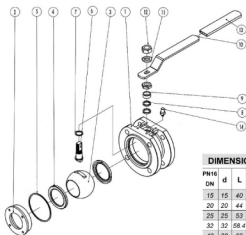
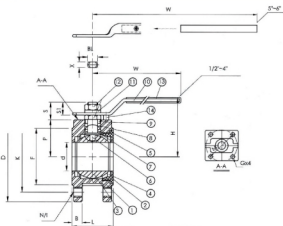
S-20C(EN10213-2 1.0619) (ASTM-A216-WCB)

FEATURES:

- *Flange:PN 16
- *Mounting pad for ISO 5211
- *Anti-static device, fire safe design
- *Blow-out proof stem, lever operated
- *Full port, solid ball

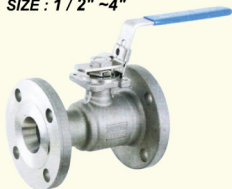
OPTION: Mounting Pad
ANSI Class 150L
Locking device

ITEM	PARTS	Q.TY	MATERIALS	
1	BODY	1	ASTM-A351-CF8M	ASTM-A351-WCB
2	INSERT	1	ASTM-A351-CF8M	ASTM-A216-WCB
3	BALL	1	ASTM-A351-CF8M	ASTM-A351-CF8
4	BALL SEAT	2	PTFE	
5	JOINT GASKET	1	PTFE	
6	STEM	1	AISI 316	AISI 304
7	THRUST WASHER	1	PTFE	
8	STEM PACKING	2	PTFE	
9	HIGH WASHER	1	AISI 304	AISI 304
10	HANDLE	1	AISI 304	AISI 304
11	SPRING WASHER	1	AISI 304	AISI 304
12	STEM NUT	2	AISI 304	AISI 304
13	PLASTIC COVER	1	PLASTIC	PLASTIC
14	STOP	1	AISI 304	AISI 304



DIMENSIONS														UNIT:mm					
PN16 DN	d	L	D	K	N1	B	F	P	S	S1	X	BL	ISO 5211 Ø	H	W	Dv FACTOR	TORQUE kgf-cm	kg	
15	15	40	95	65	4-M12x1.75	14	45	34.5	17	10.5	6.5	10	F03	63	125	10	58	1.47	
20	20	44	105	75	4-M12x1.75	14	58	38.5	17	10.5	6.5	10	F03	68	125	25	80	1.70	
25	25	53	115	85	4-M12x1.75	14.5	68	44.6	24	16.5	8.7	14	F04	81	160	35	108	2.98	
32	32	68.4	135	100	4-M16x2.0	15	78	51	24	16.5	8.7	14	F04	87	180	46	150	3.60	
40	38	62	145	110	4-M16x2.0	16.5	88	55	29	21	10	16	F05	98	200	80	200	4.00	
50	50	72	155	125	4-M16x2.0	17.5	102	63	29	21	10	16	F05	105	200	110	300	5.35	
65	65	84	185	145	4-M16x2.0	18	122	73.5	36	26	12	20	F07	121	250	310	515	9.20	
80	80	118	200	160	4-M16x2.0	19.5	138	94	36	26	12	20	F07	153	295	350	810	13.50	
100	96	140	220	180	4-M16x2.0	19.5	158	105.5	36	26	12	20	F07	164	338	720	1130	19.34	

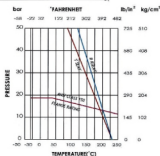
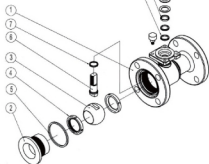
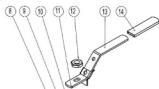
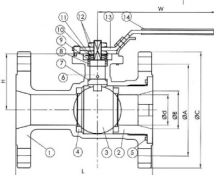
V-1FM TYPE

SIZE : 1 / 2" ~ 4"

STAINLESS STEEL
AISI-316 (EN10213-4 1.4408) (ASTM-A351-CF8M)
AISI-304 (EN10213-4 1.4308) (ASTM-A351-CF8)
CARBON STEEL
S-20C(EN10213-2 1.0619) (ASTM-A216-WCB)
FEATURES:

- *Flange: ANIS B16.5 class 150
- *Face to face: ANSI B16.10
- *Mounting Pad for ISO 5211
- *Anti-static device, fire safe design
- *Blow-out proof stem, lever operated
- *Standard bore, solid ball

OPTION: Fixed Handle
Locking device

NO	PART NAME	Q.TY	STAINLESS STEEL	CARBON STEEL
1	BODY	1	ASTM-A351-CF8M	ASTM-A216-WCB
2	CAP	1	ASTM-A351-CF8M	ASTM-A216-WCB
3	BALL	1	ASTM-A351-CF8M	ASTM-A351-CF8
4	BALL SEAT	2	PTFE	PTFE
5	JOINT GASKET	1	PTFE	PTFE
6	STEM	1	AISI 316	AISI 316
7	THRUST WASHER	1	PTFE	PTFE
8	STEM PACKING	2	PTFE	PTFE
9	STEM RING	1	AISI 304	AISI 304
10	BELLEVILLE WASHER	2	AISI 304	AISI 304
11	LOCK WASHER	1	AISI 304	AISI 304
12	STEM NUT	2	AISI 304	AISI 304
13	HANDLE	1	AISI 304	AISI 304
14	PLASTIC COVER	1	PLASTIC	PLASTIC



DIMENSIONS											UNIT: mm	
NOMINAL SIZE	ø d	ISO-5211			ø Q	A	B	C	W	I	H	Torque Nm
		ø Pcd	M	ø Q								
1/2"	10	F04	42	M5	6.6	60.5	15	89	140	108	37.5	5
3/4"	15	F04	42	M5	6.6	70.0	20	98.6	140	117	39.4	8
1"	20	F05	50	M6	10	79.5	25.4	108	180	127	47.5	10
1-1/2"	25.4	F07	70	M8	12	98.5	40	127	200	165	63.7	20
2"	40	F07	70	M8	12	120.5	50.8	152.4	200	178	72.4	30
2-1/2"	50.4	F07	70	M8	12	139.5	65	178	220	190	93.8	40
3"	65	F10	102	M10	16	152.5	80	190.5	300	203	107	60
4"	80	F10	102	M10	16	190.5	101.6	229	380	230	122	95

V-2F TYPE

150LBS

SIZE : 1 / 2" ~ 12"



ANSI CLASS 150
STAINLESS STEEL

AISI-316 (EN10213-4 1.4408) (ASTM-A351-CF8M)

AISI-304 (EN10213-4 1.4308) (ASTM-A351-CF8)

CARBON STEEL

S-20C(EN10213-2 1.0619) (ASTM-A216-WCB)

FEATURES:

*Flange: ANSI B16.5 class150

*Face to face: ANSI B16.10

*Mounting Pad for ISO 5211

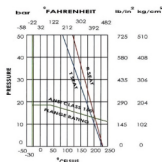
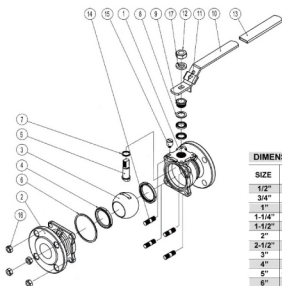
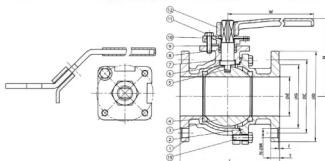
*Anti-static device, fire safe design

*Blow-out proof stem, lever operated

*Full port

OPTION: Solid ball / Hollow ball
Wrench handle
Locking device

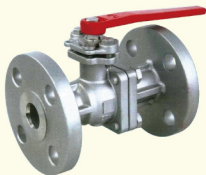
NO	PART NAME	MATERIALS			
1	BODY	FC20	WCB	CF8	CF8M
2	CAP	FC20	WCB	CF8	CF8M
3	BALL	CF8	SCS13	CF8	CF8M
4	SEAT	PTFE			
5	STEM	SS304	SS304	SS316	SS304
6	GASKET	PTFE			
7	TURNUST WASHER	PTFE			
8	PACKING	PTFE			
9	STEM PACKING	PTFE			
10	GLAND	SCS13			
11	GLAND BOLT	ASTM 194-88			
12	HANDLE	FC / WCB / SS304			
13	STOPPER	SS304			
14	SNAP RING	SS304			
15	BOLT	ASTM 194-88			



DIMENSIONS UNIT:mm

SIZE	d	D	C	G	f	T	N	M	L	H	J	K	Ma	w	iso-5211
1/2"	15	89	60.5	35	1.6	11.1	11.1	4	16	108	85	50	42	405	F04
3/4"	20	98	70	43	1.6	12.7	11.1	4	16	117	90	50	42	405	F04
1"	25	108	79.5	51	1.6	14.3	11.1	4	16	127	100	50	42	405	F04
1-1/4"	32	117	89	64	1.6	14.9	12.7	4	16	140	105	50	42	405	F05
1-1/2"	40	127	98.5	73	1.6	17.5	14.3	4	16	165	110	62	70	408	F07
2"	50	152	120.5	92	1.6	19.1	15.9	4	19	178	120	62	70	408	F07
2-1/2"	65	178	139.5	105	1.6	22.3	17.5	4	19	190	160	75	70	408	F07
3"	80	190	152.5	127	1.6	23.9	19.1	4	19	203	170	75	102	M10	F10
4"	98	229	180.5	157	1.6	23.9	23.9	8	19	229	185	75	102	M10	F10
5"	125	254	216	186	1.6	23.9	23.9	8	22	254	260	89	125	M12	F12
6"	150	279	241.5	216	1.6	25.4	25.4	8	22	294	280	89	125	M12	F12
8"	198	343	298.5	270	1.6	28.6	28.6	8	22	457	340	100	125	M12	F12
10"	250	406	362	324	1.6	30.2	30.2	12	25	533	400	100	140	M16	F14
12"	300	483	432	381	1.6	31.8	31.8	12	25	610	400	100	140	M16	F14
14"	350	533	478.5	413	1.6	35	35	12	25	688	400	100	140	M16	F14

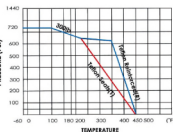
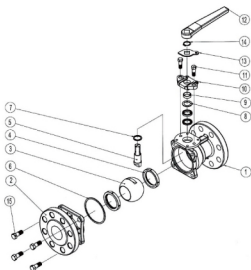
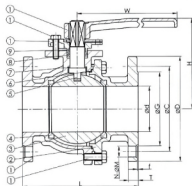
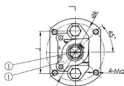
V-1FM TYPE

SIZE : 1 / 2" ~ 8"

ANSI CLASS 300
STAINLESS STEEL
AISI-316 (EN10213-4 1.4408) (ASTM-A351-CF8M)
AISI-304 (EN10213-4 1.4308) (ASTM-A351-CF8)
CARBON STEEL
S-20C(EN10213-2 1.0619) (ASTM-A216-WCB)
FEATURES:

- *Flange: ANIS B16.5 class 300
- *Face to face: ANSI B16.10
- *Mounting Pad for ISO 5211
- *Anti-static, fire safe design
- *Blow-out proof stem, lever operated
- *Full port, solid ball

OPTION: Fixed Handle

NO	PART NAME	MATERIALS		
1	BODY	CF8	CF8M	WCB
2	CAP	CF8	CF8M	WCB
3	BALL	CF8	CF8M	CF8
4	SEAT	PTFE		
5	STEM	SS304	SS316	SS304
6	GASKET	PTFE		
7	THRUST WASHER	PTFE		
8	PACKING	PTFE		
9	STEM PACKING	PTFE		
10	GLAND	SS13		
11	GLAND BOLT	ASTM 194-B8		
12	HANDLE	FC / WCB		
13	STOPPER	SS304		
14	SNAP RING	SS304		
15	BOLT	ASTM 194-B8		


DIMENSIONS
UNIT:mm

SIZE	d	D	C	G	f	T	N	M	L	H	J	K	Ma	W	ISO-5211
1/2"	15	95	66.5	35	1.6	14.3	4	16	140	85	50	42	M5	180	F04
3/4"	20	117	82.5	43	1.6	15.9	4	19	152	90	50	42	M5	180	F04
1"	25	124	89.0	51	1.6	17.5	4	19	165	100	50	42	M5	180	F04
1-1/2"	40	156	114.5	73	1.6	20.7	4	22	190	110	62	70	M8	206	F07
2"	50	165	127.0	92	1.6	22.3	8	19	216	120	62	70	M8	206	F07
2-1/2"	65	190	149.0	105	1.6	25.4	8	22	241	160	75	70	M8	324	F07
3"	80	210	168.0	127	1.6	28.6	8	22	263	170	75	102	M10	324	F10
4"	98	254	200.0	157	1.6	31.8	8	22	305	185	75	102	M10	324	F10
5"	125	279	235.0	186	1.6	35.0	8	22	381	260	89	125	M12	650	F12
6"	150	318	270.0	216	1.6	36.6	12	22	403	280	89	125	M12	650	F12
8"	198	381	330.0	270	1.6	41.3	12	25	502	340	100	125	M12	850	F12

V-2F TYPE

PN16, PN40

SIZE : 1 / 2" ~ 10"



DIN PN16, DIN PN40
STAINLESS STEEL

AISI-316 (EN10213-4 1.4408) (ASTM-A316-CF8M)

AISI-304 (EN10213-4 1.4308) (ASTM-A316-CF8)

CARBON STEEL

S-20C(EN10213-2 1.0619) (ASTM-A216-WCB)

FEATURES:

*Flange: DIN 2633 PN16

DIN 2635 PN40

*Face to face: DIN3202 F1/F4/F5

*Anti-static device, fire safe design

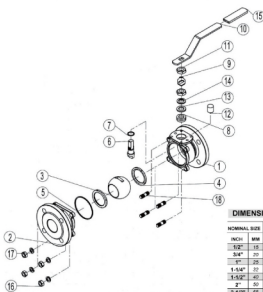
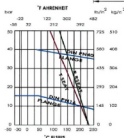
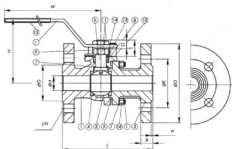
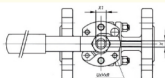
*Blow-out proof stem, lever operated

*Full port, Solid ball/Hollow ball

*Mounting Pad ISO 5211

OPTION: Fixed Handle

ITEM	PART	Q.TY	MATERIALS	
1	BODY	1	ASTM-A316-CF8M	ASTM-A216-WCB
2	CAP	1	ASTM-A316-CF8M	ASTM-A216-WCB
3	BALL	1	ASTM-A316-CF8M	ASTM-A316-CF8
4	BALL SEAT	2	PTFE	
5	JOINT GASKET	1	PTFE	PTFE
6	STEM	1	AISI 316	AISI 304
7	THROUST WASHER	1	PTFE	PTFE
8	STEM PACKING	2	PTFE	PTFE
9	STOPWIRE	1	AISI 304(1/2"-4")	AISI 304
10	HANDLE	1	AISI 304	AISI 304
11	HANDLE NUT	2	AISI 304	AISI 304
12	STOP PW	1	AISI 304	AISI 304
13	STEM RING	1	AISI 304	AISI 304
14	WELL LEVLE WASHER	2	AISI 304	AISI 304
15	PLASTIC COVER	1	PLASTIC	PLASTIC
16	NUT	1/2"-2" (solid)	AISI 304	AISI 304
17	SPRING WASHER	2-1/2"-2" (solid)	AISI 304	AISI 304
18	STUD BOLT	4" (solid)	AISI 304	AISI 304

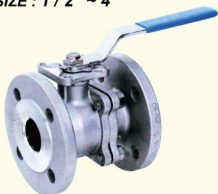


DIMENSIONS

UNIT:mm

NOMINAL SIZE	ISO 5211		L(DIN3202)					DIN-PN16				DIN-PN40				TORQUE N·M/INCH		
	INCH	MM	UsVxR	F1	F4	F5	D	K	G	B	IN	D	K	G	B		IN	H
1/2"	15	38	4-20X85X0.8	130	115	-	85	28	45	34	74X	35	25	18	14X	24	170	24
3/4"	20	50	4-20X85X0.8	150	135	-	100	35	55	45	74X	45	35	18	14X	27	170	24
1"	25	65	4-20X85X0.8	180	165	-	115	40	65	55	74X	55	40	18	14X	33	170	300
1-1/4"	31.8	80	4-20X85X0.8	180	170	-	140	100	78	55	74X	140	100	18	14X	38	170	150
1-1/2"	40	100	4-20X85X0.25	200	180	-	150	110	88	55	74X	150	110	18	14X	42	200	300
2"	50	125	4-20X85X0.25	230	210	-	165	125	100	55	74X	165	125	18	14X	45	200	300
2-1/2"	65	165	4-20X85X0.25	290	270	-	185	145	120	55	74X	185	145	18	14X	52	180	350
3"	80	200	4-12X81X0.4	210	190	-	200	160	138	25	100	200	150	24	18X	160	350	770
4"	100	250	4-12X81X0.4	230	210	-	220	180	158	25	100	230	180	24	22X	182	350	1100
6"	150	380	4-12X81X0.4	270	250	-	250	210	188	22	100	270	220	28	26X	210	700	1500
8"	200	500	4-12X81X0.4	300	280	-	280	240	212	22	100	300	260	28	28X	270	700	1800
10"	250	630	4-12X81X0.4	350	330	-	330	280	240	22	100	350	320	34	30X	340	1000	2400
12"	300	760	4-12X81X0.4	400	380	-	380	330	300	22	100	400	380	38	32X	400	1000	3300

V-2FH^{PN16}-PN40TYPE

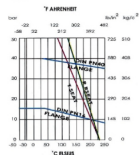
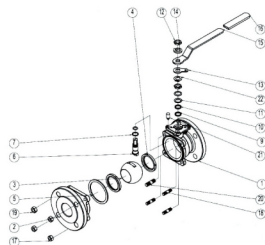
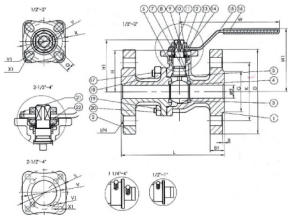
NEW
DIRECT MOUNTING PAD
SIZE : 1 / 2" ~ 4"


**DIN PN16, DIN PN40
STAINLESS STEEL**
AISI-316 (EN10213-4 1.4408) (ASTM-A351-CF8M)
AISI-304 (EN10213-4 1.4308) (ASTM-A351-CF8)
CARBON STEEL
S-20C(EN10213-2 1.0619) (ASTM-A216-WCB)

- FEATURES:**
 *Flange: DIN 2633 2635 PN16 / PN40
 *Face to face: DIN3201 F4
 *Direct Mounting Pad for ISO 5211
 *Anti-static device
 *Blow-out proof stem, lever operated
 *Full port, solid ball

OPTION: API 607 fire safe Approved

ITEM	PARTS	Q.TY	MATERIALS	
1	BODY	1	ASTM-A351-CF8M	ASTM-A216-WCB
2	CAP	1	ASTM-A351-CF8M	ASTM-A216-WCB
3	BALL	1	ASTM-A351-CF8M	ASTM-A351-F8M
4	BALL SEAT	2	PTFE	PTFE
5	JOINT GASKET	1	PTFE	PTFE
6	STEM	1	AISI 316	AISI 304
7	THRUST WASHER	1	PTFE	PTFE
8	ORING	1	VITON	VITON
9	STEM NUTTING	1	PTFE	PTFE
10	STEM RING	1	AISI 304	AISI 304
11	BELLEVEILLE WASHER	2	AISI 304	AISI 304
12	STEM NUT	2	AISI 304	AISI 304
13	STOPPER	1	AISI 304	AISI 304
14	SPRING WASHER	1	AISI 304	AISI 304
15	HANDLE	1	AISI 304	AISI 304
16	PLASTIC COVER	1	PLASTIC	PLASTIC
17	NUT*	1	AISI 304	AISI 304
18	STUD BOLT*	1	AISI 304	AISI 304
19	NUT*	3.5.7	AISI 304	AISI 304
20	STUD BOLT*	3.5.7	AISI 304	AISI 304
21	STOPPER PIN	1	AISI 304	AISI 304
22	LOCK WASHER	1	AISI 304	AISI 304



DIMENSIONS													UNIT:mm											
SIZE	Pa	DIN-PN16			DIN-PN40			L	H	H1	W	Q	V	V1	X	X1	kg	Wt	Torque N.m					
G	K	D	B	B1	IN	G	K	D	B	B1	IN	L	H	H1	W	Q	V	V1	X	X1	kg	Wt	Torque N.m	
1/2"	16	50	58	75	105	2	50	58	75	105	2	75	110	165	30	110	80	40	103.0		2.2	28	0-5	
3/4"	16	50	58	75	105	2	50	58	75	105	2	75	110	165	30	110	80	40	103.0	50	103.0	2.8	34	0-4
1"	16	50	58	75	105	2	50	58	75	105	2	75	110	165	30	110	80	40	103.0	50	103.0	3.6	46	0-10
1-1/4"	16	50	58	75	105	2	50	58	75	105	2	75	110	165	30	110	80	40	103.0	50	103.0	4.5	57	10-14
2"	16	50	58	75	105	2	50	58	75	105	2	75	110	165	30	110	80	40	103.0	50	103.0	6.0	77	15-20
2-1/2"	16	50	58	75	105	2	50	58	75	105	2	75	110	165	30	110	80	40	103.0	50	103.0	8.0	102	20-28
3"	16	50	58	75	105	2	50	58	75	105	2	75	110	165	30	110	80	40	103.0	50	103.0	11.0	140	25-35
3-1/2"	16	50	58	75	105	2	50	58	75	105	2	75	110	165	30	110	80	40	103.0	50	103.0	15.0	190	30-40
4"	16	50	58	75	105	2	50	58	75	105	2	75	110	165	30	110	80	40	103.0	50	103.0	20.0	250	35-45

**V-2FH-150L
-300L TYPE NEW**

SIZE : 1 / 2" ~ 4"



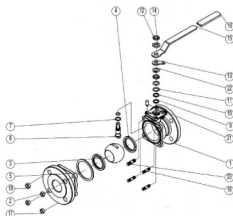
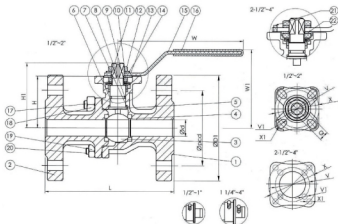
DIRECT MOUNTING PAD

**ANSI CLASS 150, ANSI CLASS 300
STAINLESS STEEL**
AISI-316 (EN10213-4 1.4408) (ASTM-A351-CF8M)
AISI-304 (EN10213-4 1.4308) (ASTM-A351-CF8)
CARBON STEEL
S-20C(EN10213-2 1.0619) (ASTM-A216-WCB)

- FEATURES:**
 *Direct Mounting Pad ISO 5211
 *Flange: ANSI B16.5 class 150
 *Face to face: ANSI B16.10
 *Anti-static device, fire safe design
 *Blow-out proof stem, lever operated
 *Full port, solid ball / hollow ball

OPTION: Mounting Pad

ITEM	PART	Q.TY	MATERIALS	
1	BODY	1	ASTM-A351-CF8M	ASTM-A351-CF8M
2	CAP	1	ASTM-A351-CF8M	ASTM-A216-CF8M
3	BALL	1	ASTM-A351-CF8M	ASTM-A351-CF8
4	BALL SEAT	2	PTFE	PTFE
5	JOINT GASKET	1	PTFE	PTFE
6	STEM	1	AISI 316	AISI 304
7	TURNER WASHER	1	PTFE	PTFE
8	ORING	1	NYLON	NYLON
9	STEM PACKING	1	PTFE	PTFE
10	STEM RING	1	AISI 304	AISI 304
11	BELLEVILLE WASHER	2	AISI 304	AISI 304
12	STEM NUT	2	AISI 304	AISI 304
13	STOPPER	1	AISI 304	AISI 304
14	SPRING WASHER	1	AISI 304	AISI 304
15	HANDLE	1	AISI 304	AISI 304
16	PLASTIC COVER	1	PLASTIC	PLASTIC
17	NUT*1	1	AISI 304	AISI 304
18	STUD BOLT*1	1	AISI 304	AISI 304
19	NUT*2	3.5/7	AISI 304	AISI 304
20	STUD BOLT*2	3.5/7	AISI 304	AISI 304
21	STOPPER PIN	1	AISI 304	AISI 304
22	LOCK WASHER	1	AISI 304	AISI 304

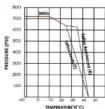
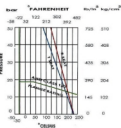


DIMENSIONS 150L

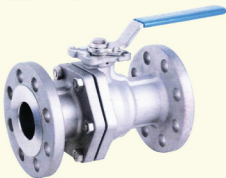
NOMINAL SIZE	DIMENSIONS 150L											UNIT:mm			
	gnd	Ø D1	Ø PCD	L	H	H1	W	Q	V	V1	X	X1	W1	Torque Nm	Torque lbs-ft
1/2"	15	89	80.5	108	48.5	56	110	9.0	4.2	6.0	-	-	80	6-5	-
3/4"	20	98	70	117	51.5	61	110	9.0	42	93.0	50	93.5	94	8-8	-
1"	25	108	79.5	127	57.5	67	136	11	42	93.0	50	93.5	95	8-10	-
1-1/2"	40	127	96.5	155	76.5	82	202	14	50	93.5	70	94.5	110	18-20	-
2"	50	152.4	120.5	178	83.5	89	263	14	50	93.5	70	94.5	117	25-30	-
2-1/2"	65	178	139.5	190	118.5	117	377	17	70	94.5	110	94.5	155	32-36	-
3"	80	193.5	152.4	203	129.5	148	477.5	17	70	94.5	132	94.5	168	50-60	-
4"	100	229	190.5	236	145	163.5	577.5	17	70	94.5	152	94.5	182	65-80	-

DIMENSIONS 300L

NOMINAL SIZE	DIMENSIONS 300L											UNIT:mm				
	gnd	Ø D	Ø PCD	L	Ø M	H	H1	W	Q	V	V1	X	X1	W1	Torque Nm	Torque lbs-ft
1/2"	15	85	68.5	140	14.3	16.4	48.5	55	110	9.0	4.2	7.0	-	80	6-5	-
3/4"	20	117	82.5	152	15.9	19.4	51.0	61	110	9.0	42	93.0	90	93.5	94	8-8
1"	25	124	86	165	17.6	19.4	52.5	67	136	11	42	93.0	90	93.5	95	8-10
1-1/2"	40	186	114.5	190	20.7	22.4	78.5	82	203	14	50	93.5	70	94.5	110	18-20
2"	50	185	127	216	22.2	19.4	83.5	89	263	14	50	93.5	70	94.5	117	25-30
2-1/2"	65	190	145	241	25.4	22.8	118.5	137	377.5	17	70	94.5	100	155	32-36	
3"	80	210	168	267	28.4	22.8	129.5	148	477.5	17	70	94.5	100	188	50-60	
4"	100	254	200	305	31.4	22.8	145	163	577.5	17	70	94.5	100	182	65-85	



V-2FH-JIS 10K TYPE NEW

DIRECT MOUNTING PAD
SIZE : 1/2" ~ 4"

JIS 10K, JIS 20K
STAINLESS STEEL
AISI-316 (EN10213-4 1.4408) (ASTM-A351-CF8M)
AISI-304 (EN10213-4 1.4308) (ASTM-A351-CF8)
CARBON STEEL
S-20C(EN10213-2 1.0619) (ASTM-A216-WCB)
FEATURES:

*Flange: JIS 10K B2212

JIS 20K B2214

*Face to face: DIN3202 F1 / F4 / F51

*Anti-static device, fire safe design

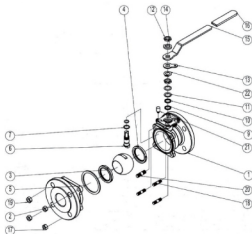
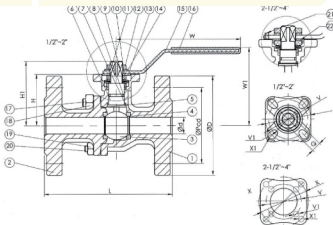
*Blow-out proof stem, lever operated

*Full port, solid ball / hollow ball

*Direct Mounting Pad ISO 5211

OPTION: Fixed Handle

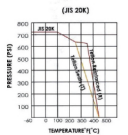
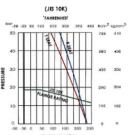
ITEM	PART	Q.TY	MATERIALS
1	BODY	1	ASTM-A351-CF8M / ASTM-A216-WCB
2	CAP	1	ASTM-A351-CF8M / ASTM-A216-WCB
3	BALL	1	ASTM-A351-CF8M / ASTM-A351-FBM
4	BALL SEAT	2	PTFE
5	JOINT GASKET	1	PTFE
6	STEM	1	AISI 316 / AISI 304
7	TRUSS WASHER	1	PTFE
8	O-RING	1	VITON / VITON
9	STEM PACKING	1	PTFE
10	STEM WING	1	AISI 304 / AISI 304
11	RELIEF VALVE WASHER	2	AISI 304 / AISI 304
12	STEM NUT	2	AISI 304 / AISI 304
13	STOPPER	1	AISI 304 / AISI 304
14	SPRING WASHER	1	AISI 304 / AISI 304
15	HANDLE	1	AISI 304 / AISI 304
16	PLASTIC COVER	1	PLASTIC / PLASTIC
17	NUT?	1	AISI 304 / AISI 304
18	STUD BOLT?	1	AISI 304 / AISI 304
19	NUT?	3.5?	AISI 304 / AISI 304
20	STUD BOLT?	3.5?	AISI 304 / AISI 304
21	STOPPER PIN	1	AISI 304 / AISI 304
22	LOCK WASHER	1	AISI 304 / AISI 304


DIMENSIONS (JIS 10K)

SIZE	ed	φ	D	φ	Pol	L	H	H1	W	Q	V	V1	X	X1	W1	Torque N·m
1/2"	15	89	72	110	46.5	32	110	62	42	43.0	18	18	18	18	4-1/2	10
3/4"	20	100	75	127	51.5	37	110	67.5	42	43.0	21	21	21	21	5-1/2	15
1"	25	125	90	150	57.5	41	126	71	42	43.0	24	24	24	24	6-1/2	20
1-1/4"	32	150	105	180	71.5	47	175	94	50	43.5	30	30	30	30	10-1/2	25-30
1-1/2"	40	160	120	195	76.5	49	200	94	50	43.5	32	32	32	32	10-1/2	30-35
2"	50	180	150	225	90	55	250	110	60	43.5	36	36	36	36	12-1/2	35-40
2-1/2"	60	175	160	240	100.5	57	270	117	70	44.5	36	36	36	36	12-1/2	40-45
3"	80	185	180	260	108.5	59	275	117	70	44.5	36	36	36	36	12-1/2	45-50
4"	100	210	195	290	140	60	307.5	117	70	44.5	36	36	36	36	12-1/2	50-55

DIMENSIONS (JIS 20K)

SIZE	ed	φ	D	φ	Pol	L	H	H1	W	Q	V	V1	X	X1	W1	Torque N·m
1/2"	15	89	75	140	47.5	30	130	67.5	42	43.0	18	18	18	18	4-1/2	10
3/4"	20	100	75	152	52.5	31	130	72.5	42	43.0	20	20	20	20	5-1/2	15
1"	25	125	90	165	57.5	32	130	77.5	42	43.0	22	22	22	22	6-1/2	20
1-1/4"	40	140	105	180	70	37	200	94	50	43.5	30	30	30	30	10-1/2	25-30
1-1/2"	50	160	120	200	75	39	200	94	50	43.5	32	32	32	32	10-1/2	30-35
2"	60	175	140	210	82.5	41	275	117	70	44.5	36	36	36	36	12-1/2	35-40
2-1/2"	75	175	140	240	110.5	43	275	117	70	44.5	36	36	36	36	12-1/2	40-45
3"	90	190	160	250	120	45	275	117	70	44.5	36	36	36	36	12-1/2	45-50
4"	100	225	185	285	145	46.5	307.5	117	70	44.5	36	36	36	36	12-1/2	50-55



V-3F TYPE

SIZE : 1 / 2" ~ 4"



ANSI-CLASS 150, DIN PN16 / PN40
STAINLESS STEEL

AISI-316 (EN10213-4 1.4408) (ASTM-A351-CF8M)

AISI-304 (EN10213-4 1.4308) (ASTM-A351-CF8)

CARBON STEEL

S-20C(EN10213-2 1.0619) (ASTM-A216-WCB)

FEATURES:

*Face to face DIN 3202-F1, ANSI 16.1

*Locking device, Lug body.

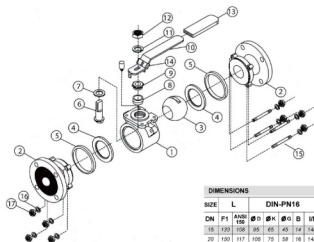
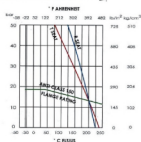
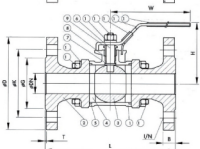
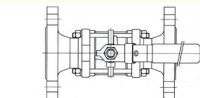
*Blow-out proof stem

*Investment casting body and cap

OPTION: Locking device

Mounting Pad ISO 5211

ITEM	PARTS	Q. TY	MATERIALS	
1	BODY	1	ASTM-A351-CF8M	ASTM-A216-WCB
2	FLANGED END CAP	2	ASTM-A351-CF8M	ASTM-A216-WCB
3	BALL	1	ASTM-A351-CF8M	ASTM-A351-CF8
4	BALL SEATS	2	PTFE	PTFE
5	JOINT GASKET	2	PTFE	PTFE
6	STEM	1	AISI 316	AISI 304
7	THRUST WASHER	1	PTFE	PTFE
8	STEM PACKING	2	PTFE	PTFE
9	GLAND NUT	1	AISI 304	AISI 304
10	HANDLE	1	AISI 304	AISI 304
11	STEM WASHER	1	AISI 304	AISI 304
12	STEM NUT	1	AISI 304	AISI 304
13	PLASTIC COVER	1	PLASTIC	
14	LOCK DEVICE	1	AISI 304	AISI 304
15	BOLT	4(3" 4"x 5pcs)	AISI 304	AISI 304
16	SPRING WASHER	8(3" 4"x 12pcs)	AISI 304	AISI 304
17	HEX NUT	8(3" 4"x 12pcs)	AISI 304	AISI 304



DIMENSIONS

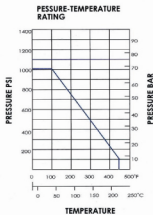
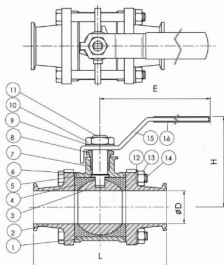
SIZE	L	DIN-PN16				DIN-PN40				ANSI-150				T	H	W	CV FACTOR	TORQUE kgf/cm				
		DN	F1	ANSI 150	ØK	ØG	ØB	LN	ØD	ØK	ØG	ØB	LN						ØD	ØK	ØG	ØB
15	120	708	95	65	45	14	144	95	65	45	18	144	80	100	35	11.2	1604	2	68	130	11.2	24
20	150	117	100	70	58	16	144	100	70	58	18	144	90	70	42	12.7	1604	2	72	152	21	29
25	180	127	110	80	68	18	144	110	80	68	18	144	100	78	48	14.3	1604	2	80	168	25	106
32	180	140	140	100	70	18	184	140	100	78	18	184	117	85	64	15.9	1604	2	91	185	37	150
40	200	165	160	110	88	18	184	160	110	88	18	184	127	98	72	17.5	1604	3	101	183	80	200
50	230	178	185	125	102	18	184	185	125	102	20	184	152	120.5	82	19.1	1604	3	110	182	150	280
65	280	190	188	143	122	18	184	188	143	122	22	188	178	139.5	105	22.3	1604	3	134	250	295	510
80	310	200	200	150	138	20	180	200	160	138	24	180	190	152.5	127	23.9	1604	3	165	283	415	780
100	350	220	220	160	158	20	180	220	180	162	24	220	220	180.5	137	23.9	1604	3	187	293	760	1100

V-3SAN TYPE

SIZE : 1 / 4" ~ 4"

STAINLESS STEEL AISI316
(EN10213-4 1.4408) (ASTM-A351-CF8M)
FEATURES:
**Pipe thread in accordance with ANSI B2.1, BS21 1973
 DIN259 / 2999, ISO228*
**Ball-out proof stem / full port*
**Investment casting body and cap*
**1000PSI*
**Clamp end, Butt weld end*
OPTION: Cavity filled
Locking device
Mounting Pad ISO5211

NO	PARTS NAME	MATERIALS
1	BODY	AISI 316
2	CAP	AISI 316
3	BALL	AISI 316
4	SEAT	PTFE
5	BODY SEAT	PTFE
6	THRUST WASHER	PTFE
7	STEM PACKING	PTFE
8	GLAND NUT	AISI 304
9	STEM WASHER	AISI 304
10	STEM NUT	AISI 304
11	STEM	AISI 316
12	BOLT WASHER	AISI 304
13	NUT	AISI 304
14	BOLT	AISI 304
15	HANDLE	AISI 304
16	PLASTIC COVER	PLASTIC



DIMENSIONS		UNIT:mm			
MM	SIZE IN	D±0.5	L±1.0	H±3.0	E±3.0
16	1/2"	9.5	89	61	106
20	3/4"	15.9	101	64	106
26	1"	22.2	114	68	131
40	1-1/2"	35.0	140	96	193
50	2"	47.6	156	100	193
65	2-1/2"	60.2	197	140	260
80	3"	73.0	229	155	260
100	4"	97.4	241	180	290

V-3SAN POLISH TYPE

SIZE : 1/4" ~ 2"



STAINLESS STEEL
AISI-316 (EN10213-4 1.4408) (ASTM-A351-CF8M)

FEATURES:

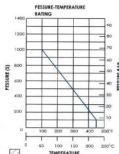
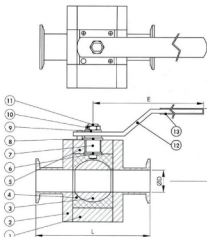
- *Cavity filled
- *Blow-out proof stem / full port
- *Investment casting body and cap
- *1000PSI
- *Clamp end, Butt weld end
- *Outside polished

OPTION: Locking device

ITEM	PARTS NAME	MATERIALS
1	BODY	AISI 316
2	CAP	AISI 316
3	BALL	AISI 316
4	SEAT	PTFE
5	BODY SEAT	PTFE
6	THRUST WASHER	PTFE
7	STEM PACKING	PTFE
8	GLAND NUT	AISI 304
9	STEM WASHER	AISI 304
10	STEM NUT	AISI 304
11	STEM	AISI 316
12	HANDLE	AISI 304
13	PLASTIC COVER	PLASTIC

DIMENSIONS UNIT:MM

SIZE	ISO-4211	D	0.5	L	1.0	H	2.0	E	3.0	A
MM	IN									
15	1/2"	F03	9.5	89	61	137	12.7			
20	3/4"	F03	15.9	101	57	137	19.2			
25	1"	F04	22.2	114	60	137	25.4			
40	1-1/2"	F05	35.0	140	90	198	38.2			
50	2"	F05	47.6	156	108	198	50.8			



SPECIAL SEATS & BALLS

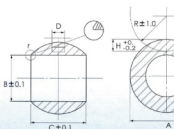
*PTFE, 15% Glassfiber TEFLON, 25% Carbon TEFLON,
25% Graphite TEFLON, 50% S.S.316 TEFLON



NO	SIZE	A	B	C	D	H	r	R
V2010	3/8"	21.8	12.7	16.7	4.7	3.7	0.7	12
V2014	1/2"	28	16	21.1	4	5	0.8	17
V2020	3/4"	34	20	25.2	5	5.9	0.8	17
V2025	1"	43	25	33.1	5	5.9	0.8	17
V2032	1-1/8"	54	32	42	8	7	0.9	27
V2038	1-1/2"	63	38.1	48.3	9.8	10	0.9	27
V2040	2"	80	50.8	69.8	10	9.8	1	37.5
V2045	2-1/2"	102	65	75.2	12	14	1.1	37.5
V2050	3"	125	80	93	12	16	1.2	50
V2100	4"	154	100	114.5	12	16	1.5	50
V2125	5"	190	124	139	20	18	1.7	50
V2150	6"	220	150	170	20	18	1.7	50
V2175	8"	300	200	220	30	20	2	50
V2200	10"	370	250	267	30	30	2.3	62.5

A:below V2100 is +0.05
-0.1
above V2100 is +0.1
-0.2

D:below V2050 is +0.04
-0.1
above V2050 is +0.07
-0.1



WE ALSO MANUFACTURE VARIOUS BALLS AS PER CUSTOMER'S SPECIFICATION.